



Site: **Aatmiya Princess Villa**
Near Collabera, Beside Shaishav School,
Gotri-Sevasi Main Road, T.P-60,
Gotri, Vadodara

Corporate Office:
Aatmiya House, Aatmiya Heights,
Before Voltamp Transformers,
Makarpura Main Road, Vadodara

Mob.: +91 98799 39191, 97277 53150
Email: aatmiyamayur@gmail.com
Web.: www.aatmiyagroup.com



Follow us on: 



"Luxury is in each detail"

-Hubert De Givenchy

We at Aatmiya Group strongly abide by the age old saying "God lies in the details".

Prince Villa-Phase I was one of our most ambitious offering. Its sheer size and detailed facilities was highly appreciated by the 'Bhadralok' of Vadodara.

Taking a step further now we present Prince Villa-Phase II. With even greater number and bigger sized lifestyle amenities, apart from a host of luxury Villa Options in 4BHK Planning. One which shall further redefine luxury living in Vadodara.

Designed by the well acclaimed & gifted architect Mr. Bhaskar Narula (Placekinesis Asso., Ahmedabad), Prince Villa brings good living in its true sense!



Spacious. Serene. Stylish.
For a Select few!

Basking in stark affluence, embracing many a world, inspiring many a people! Welcome to a world perfect in virtually every respect.

4 BHK Villas in multiple planning options, with spacious and abundant open landscaped spaces and a delightful Clubhouse that features a host of premium leisure amenities.

Never before has, and perhaps never again in our time, will so many exceptional elements be put together to create such a remarkable residential landmark...and more importantly, to create the holistic experience that the limited edition residential units offer-for a few privileged ones!



Layout Plan



Where every aspect
speaks of Quality & Craftsmanship

Specifications

Structure: All RCC & Brick work as per structural Engineer's design

Flooring: High Grade Vitrified Tiles in all rooms. Wooden Flooring in Master Bedroom. Tiles in compound (Basic Area).

Kitchen: Exclusive Granite Platform with S.S Sink with designer tiles upto lintel level over the platform.

Bathrooms: Branded bath fitting, good quality plumbing fixtures and sanitary ware. Concealed C.P.V.C plumbing fittings.

Water: Underground & Overhead Water Tank

Doors: Attractive Entrance Door with standard safety lock & other Decorative Fittings with wooden safety bars. Internal Good Quality Flush Doors.

Electrification: Concealed copper ISI wiring and branded premium quality modular switches with sufficient points.

Paint & Finish: Internal smooth finish plaster with Putty & distemper. External Double Coat Plaster with weather resistant Paint.

Terrace: Open terrace finished with "China Mosaic".



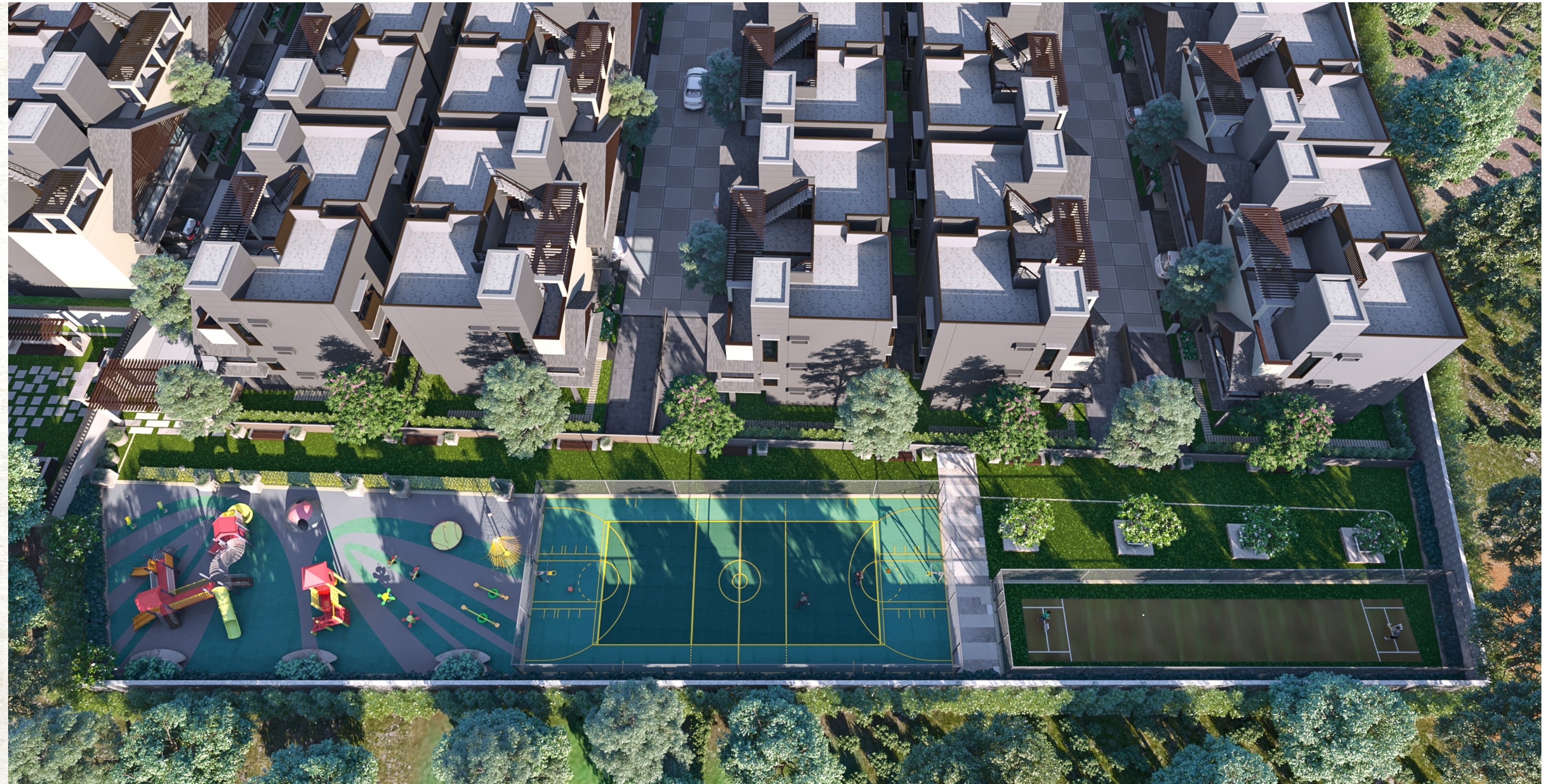


Thoughtful amenities, planned for each member of your family!

We at Prince Villa understand the Indian sensibilities and hence the Prince Club has been specially designed such that it caters to each member of the family.

The Club features an exclusive Ladies Gym and Swimming Pool, where the ladies can enjoy in privacy. Also the needs of the children has been taken care of with a Children's Pool, Cartoon Theater, Play area and Garden. Families can enjoy together at the Indoor Games Area, Swimming Pool, Cafeteria, Theater; the elderly can take a stroll in the large garden and interact with fellow residents at the Senior Citizen Area and the Temple.

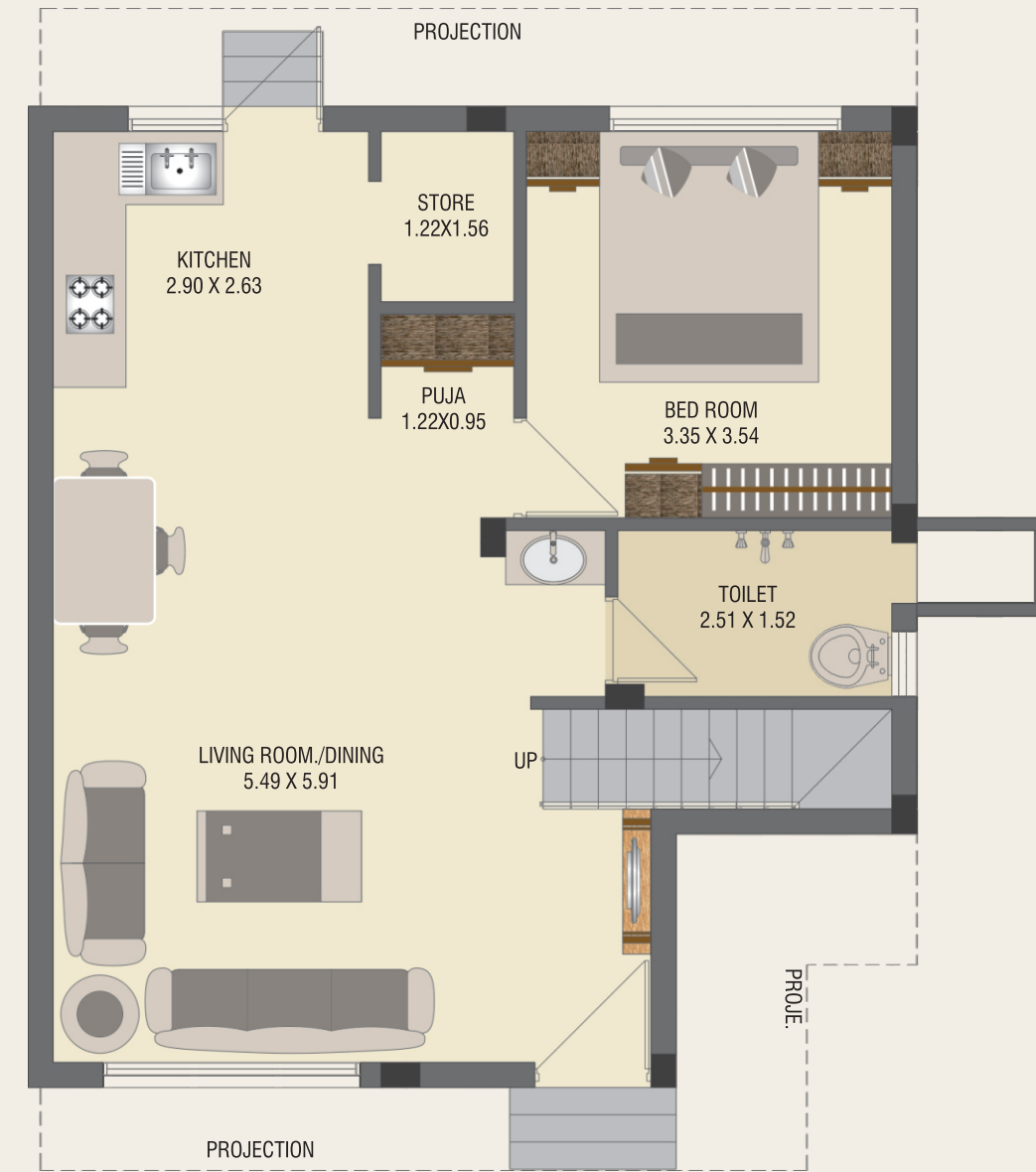
Enjoyment for all members, happiness for the whole family!



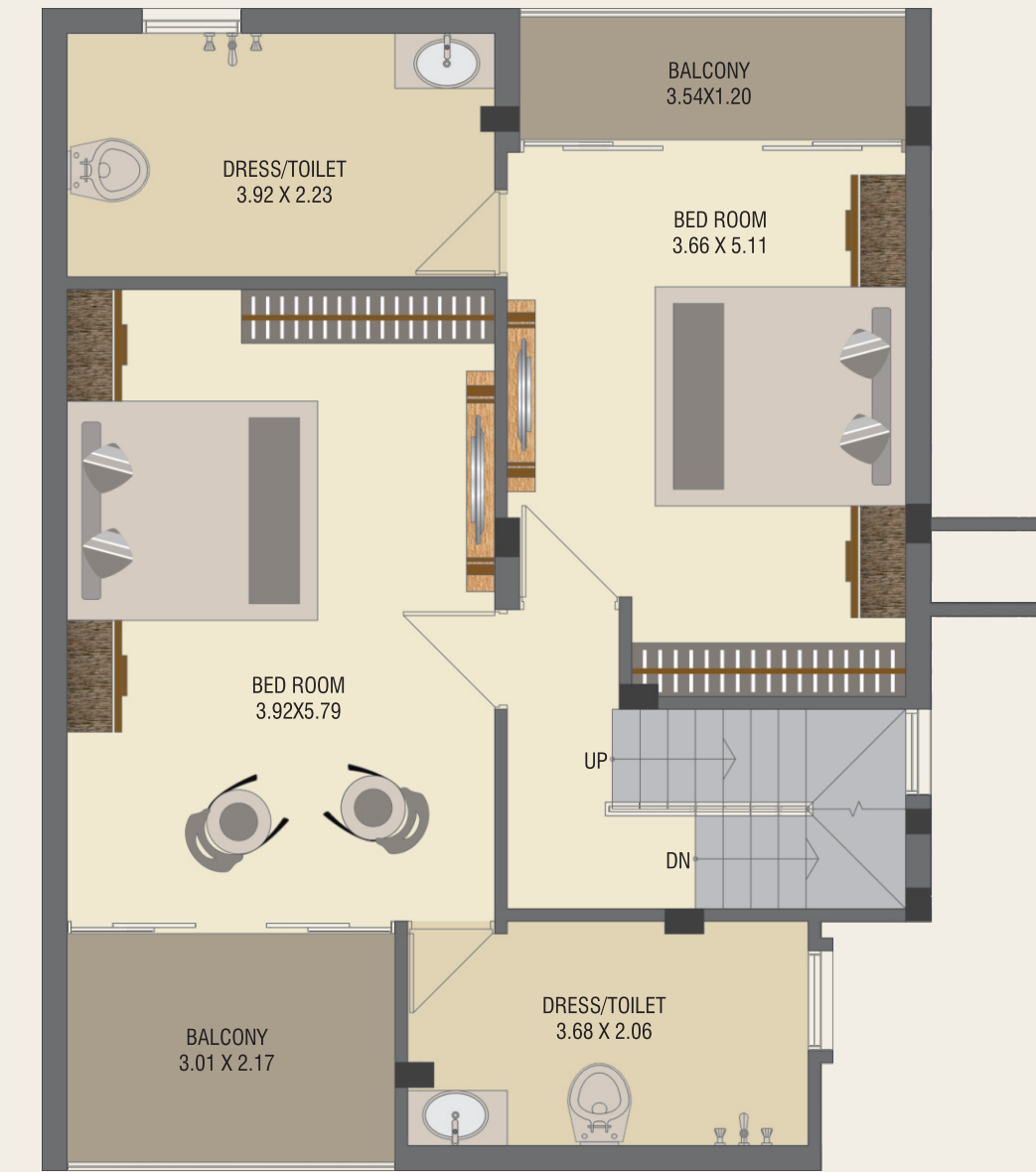


PLOT:
215, 217,
218, 219

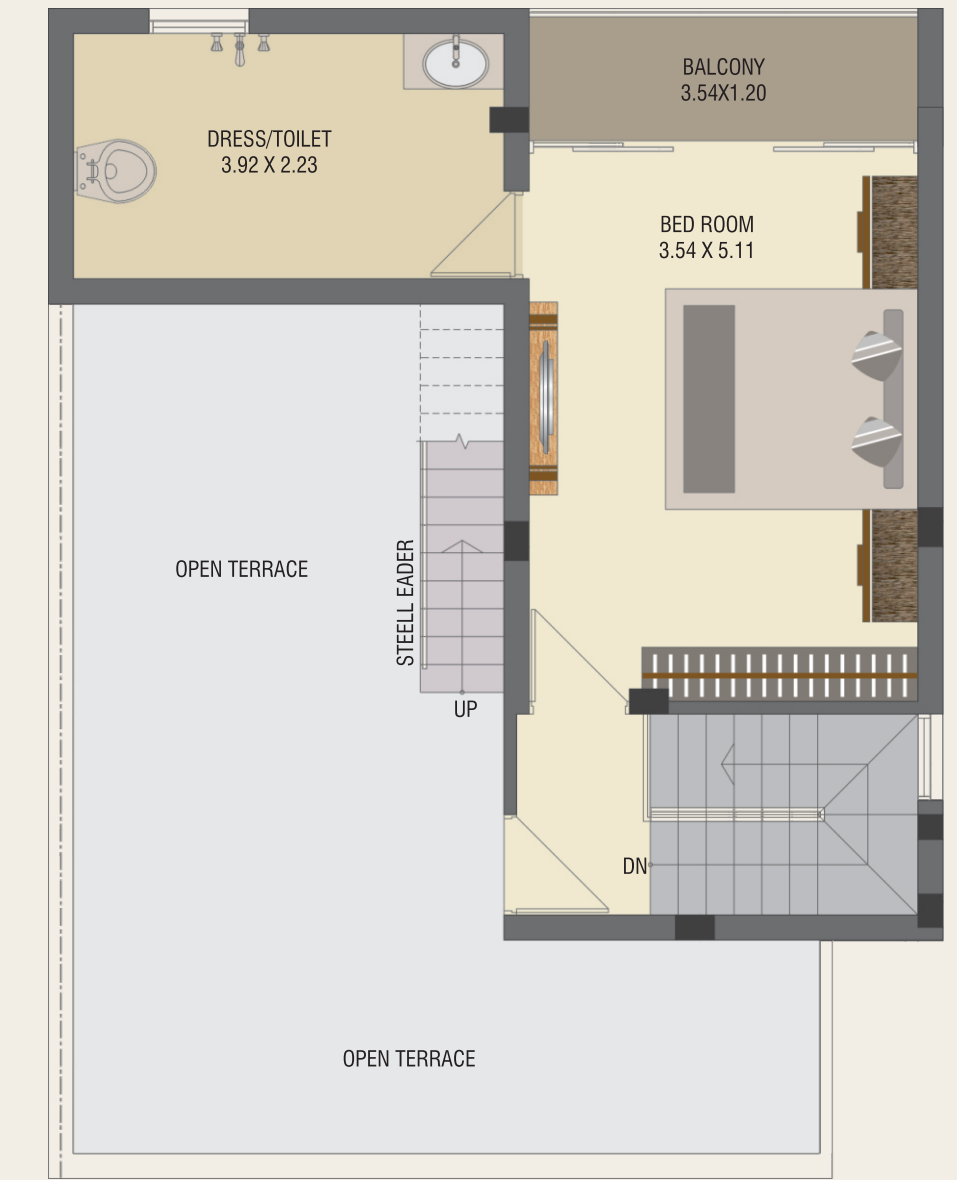
Ground Floor



First Floor

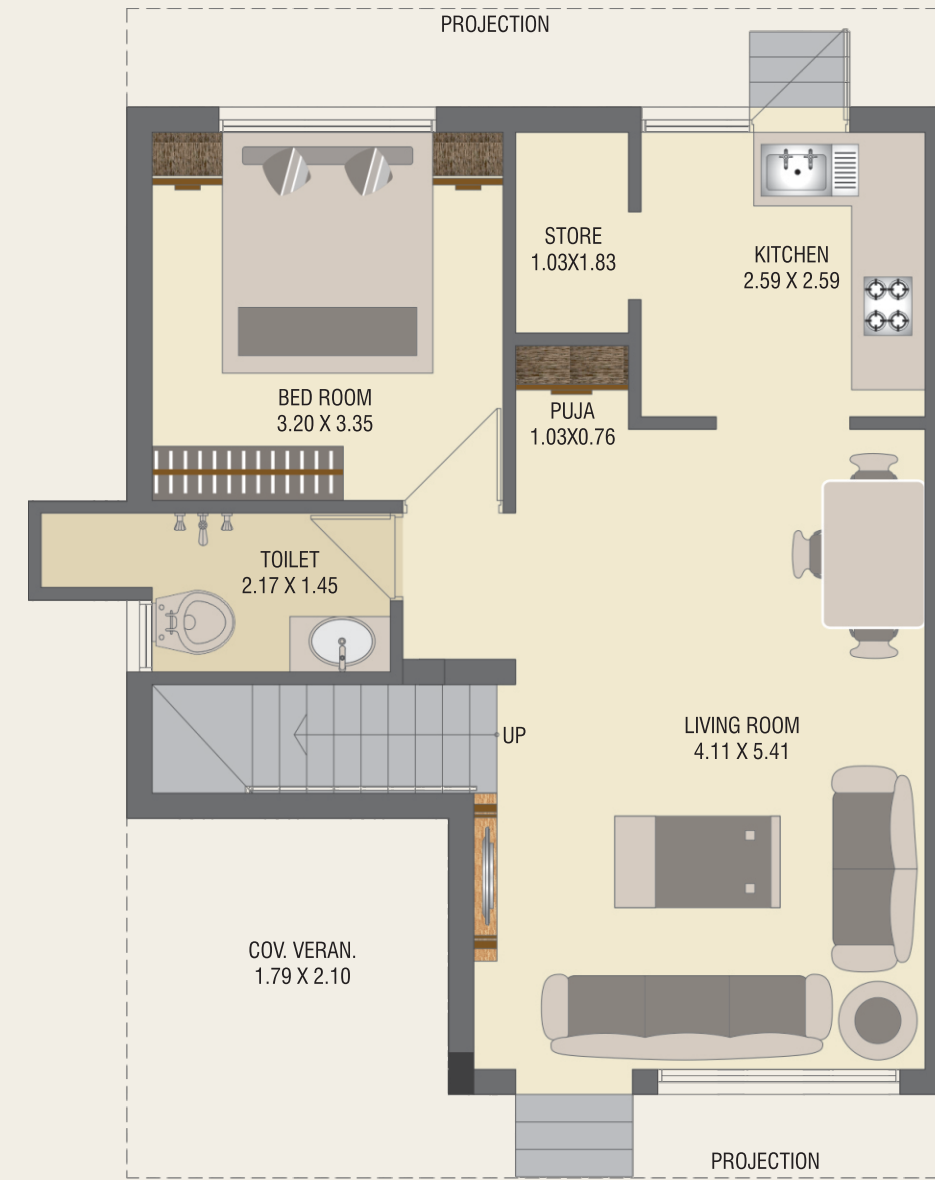


Second Floor

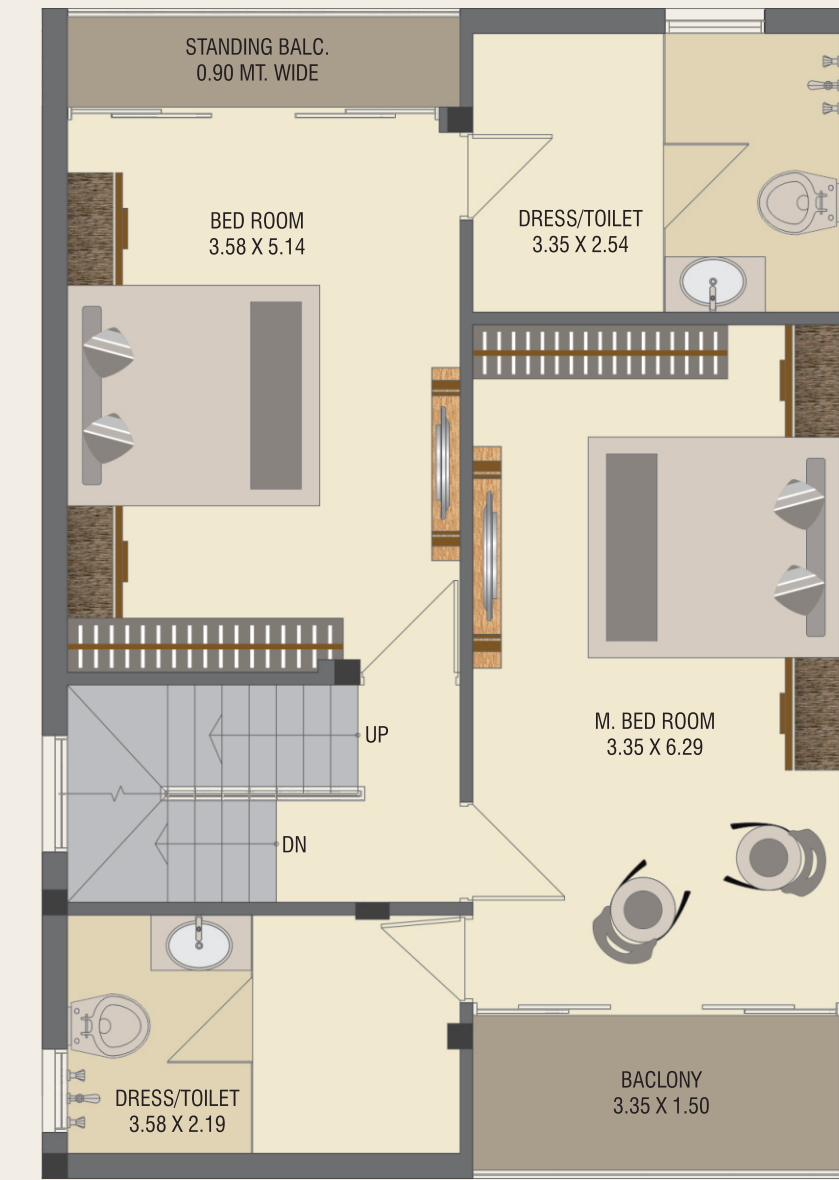


PLOT:
216

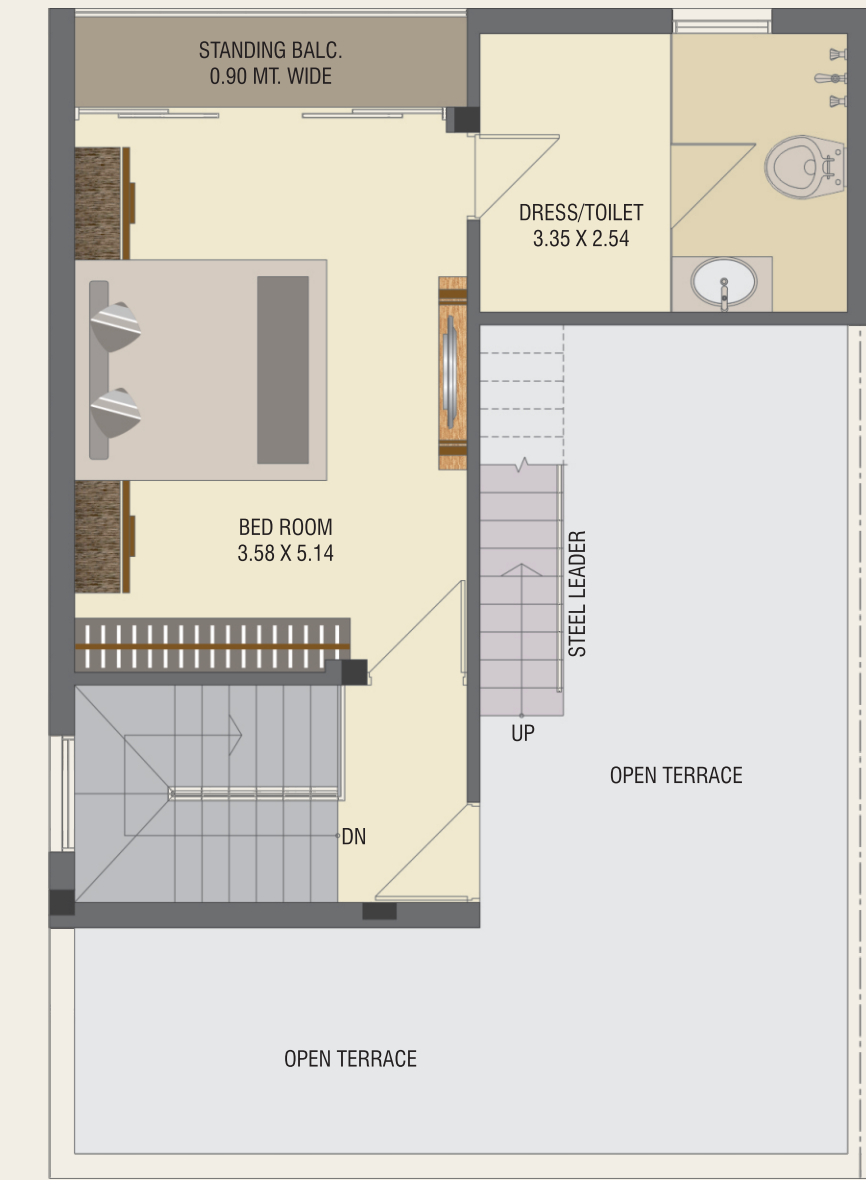
Ground Floor



First Floor

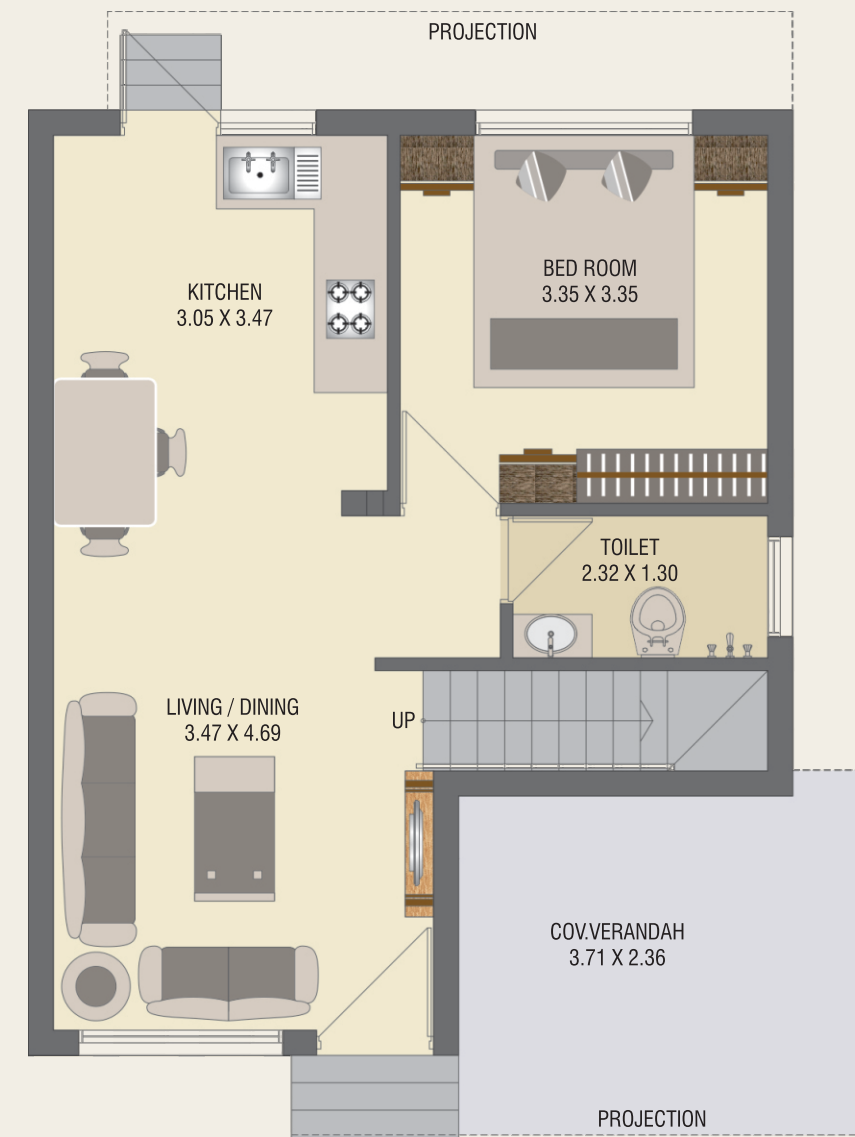


Second Floor

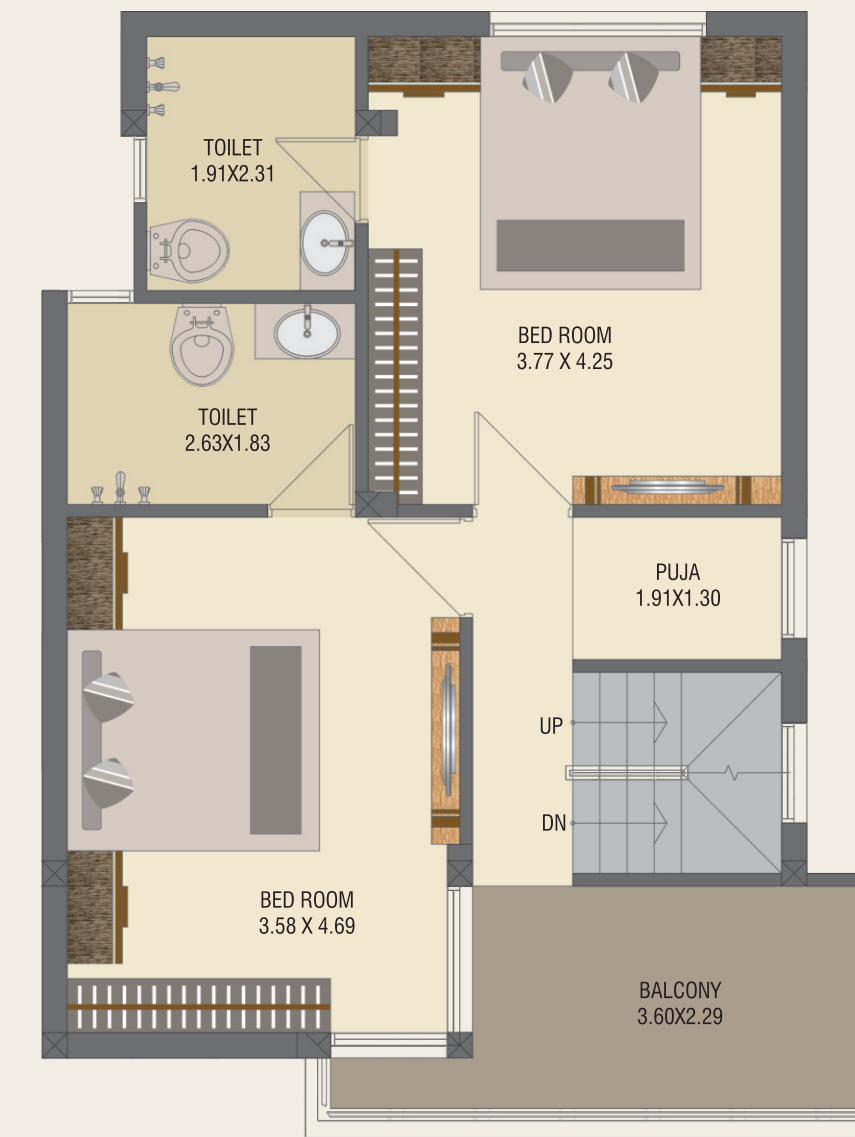


PLOT:
 220 to 225,
 227to238, 241,
 289 & 290

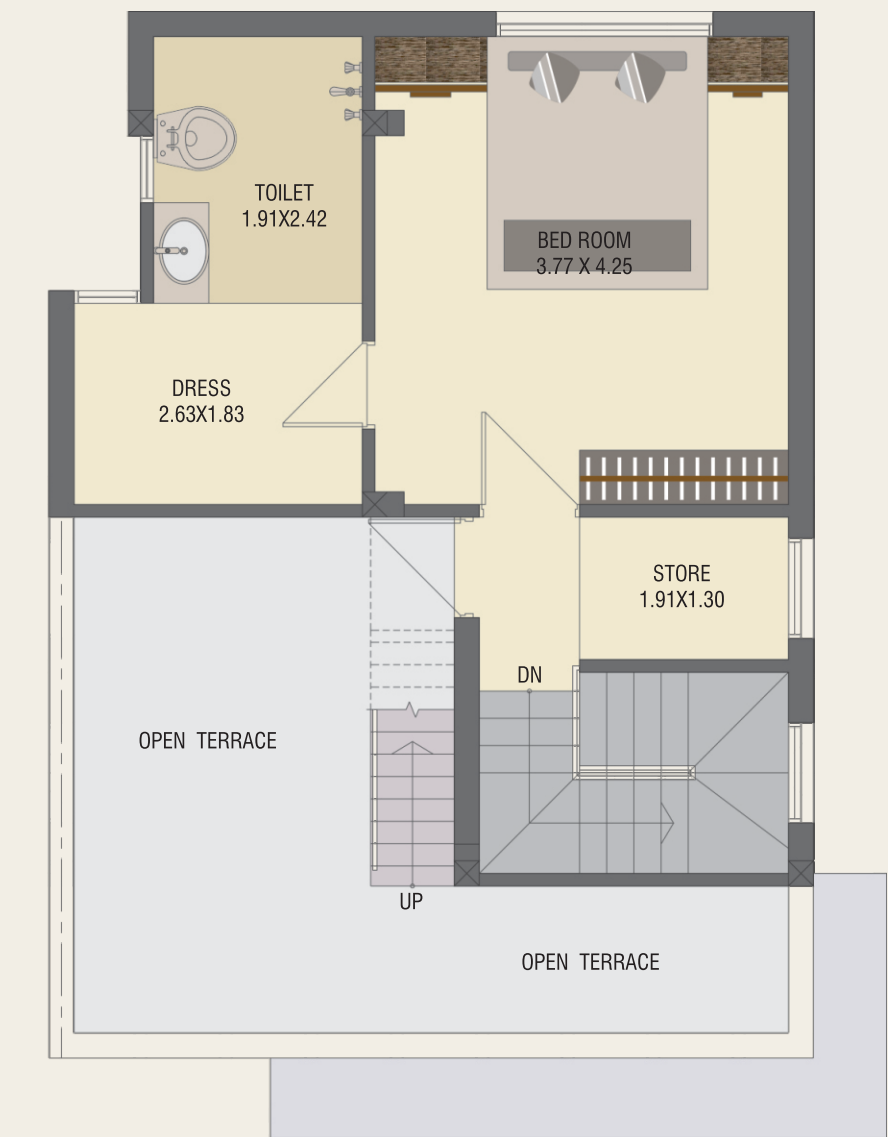
Ground Floor



First Floor

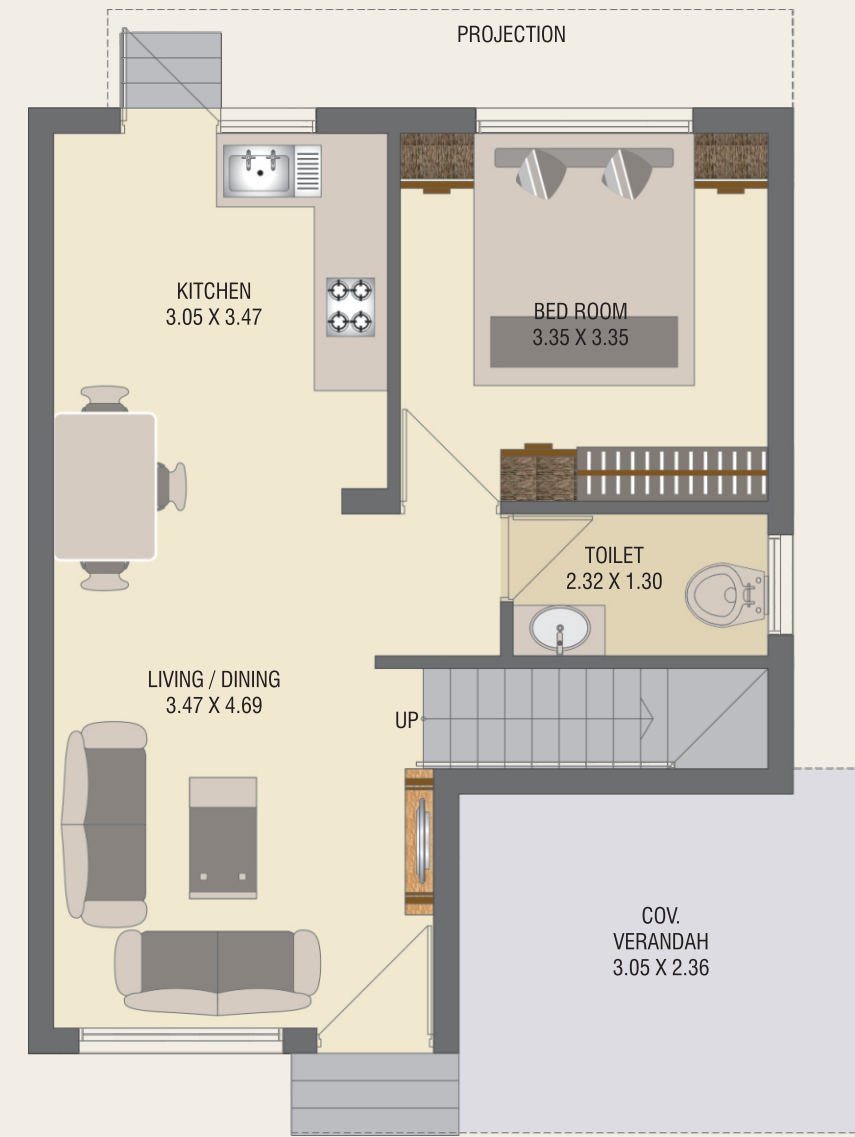


Second Floor

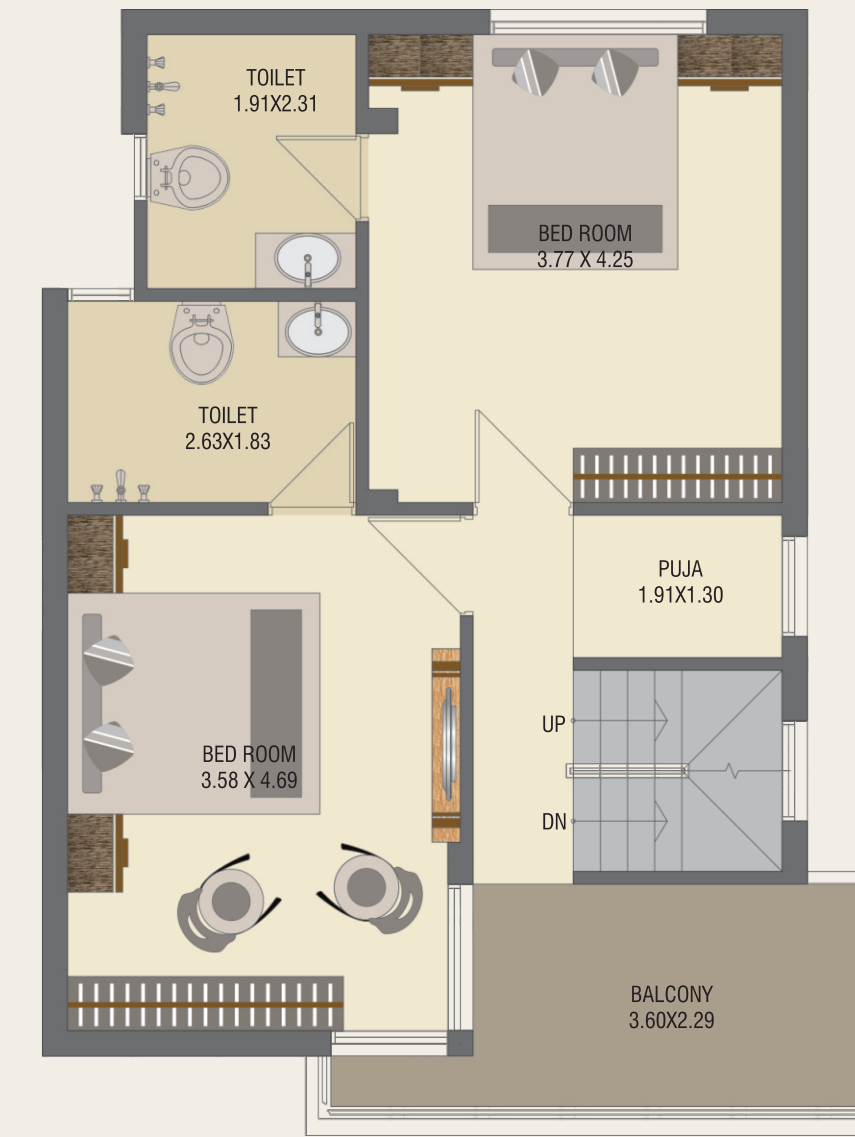


PLOT:
226,239 &
240

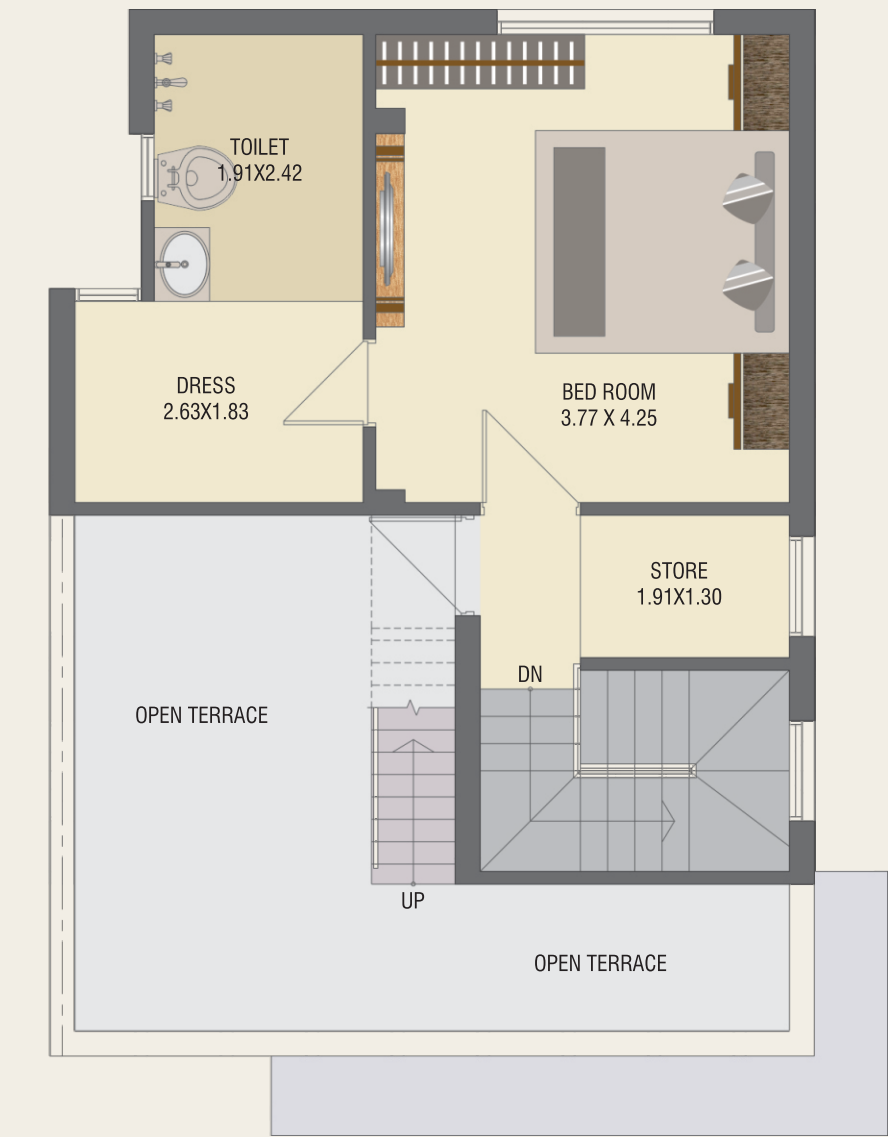
Ground Floor



First Floor

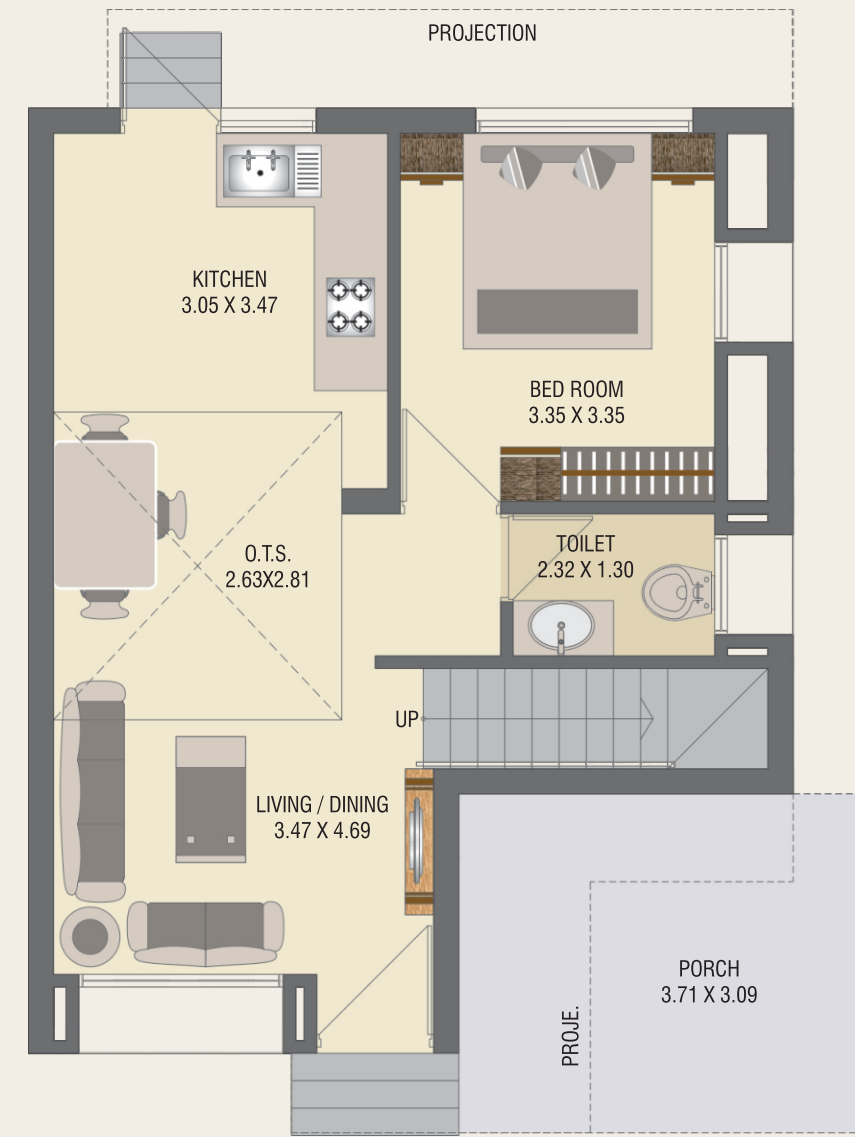


Second Floor

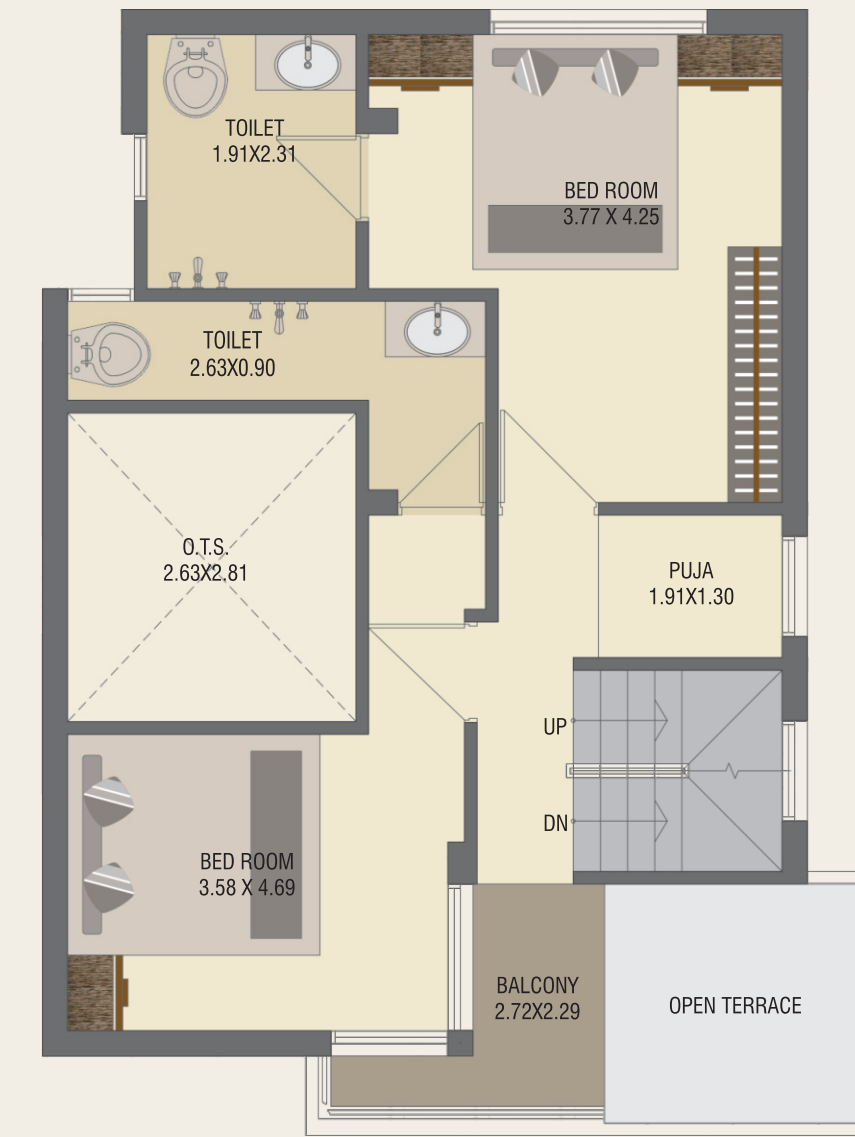


PLOT:
242 to 253,
287 & 288

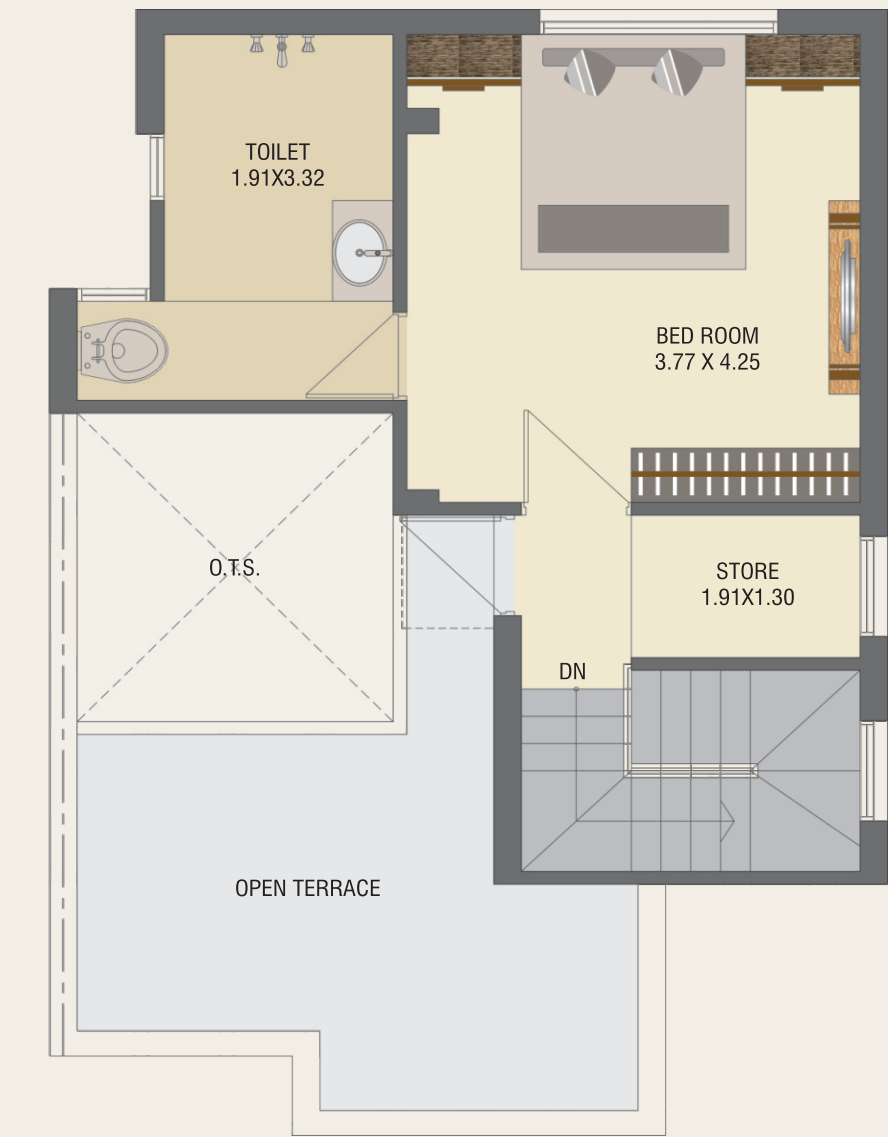
Ground Floor



First Floor

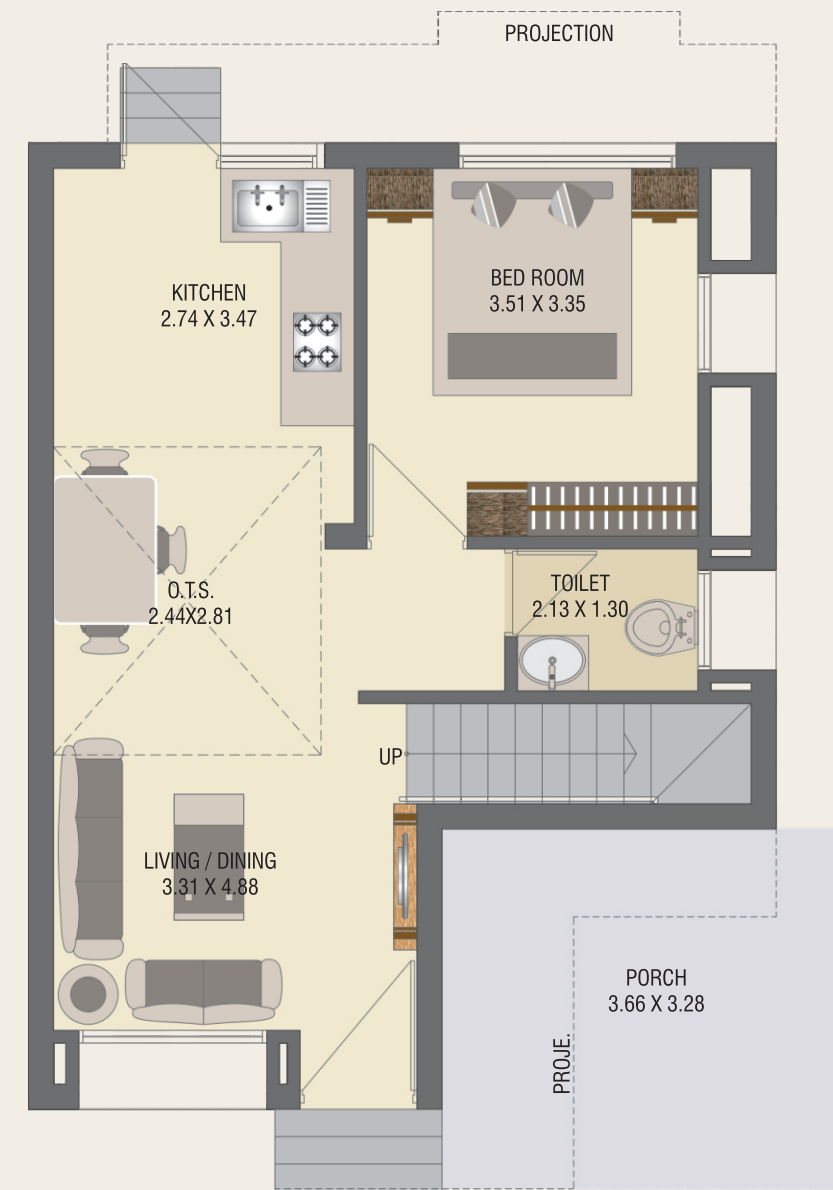


Second Floor

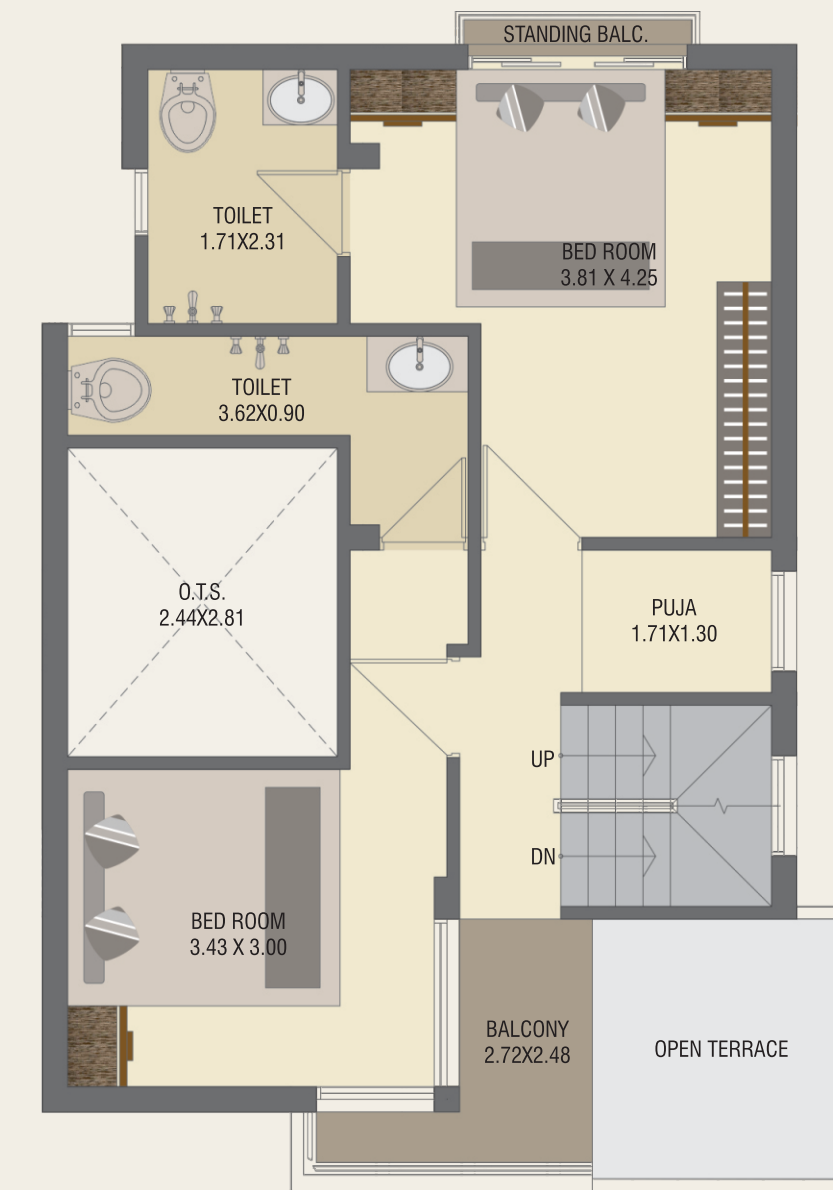


PLOT:
254 to 261

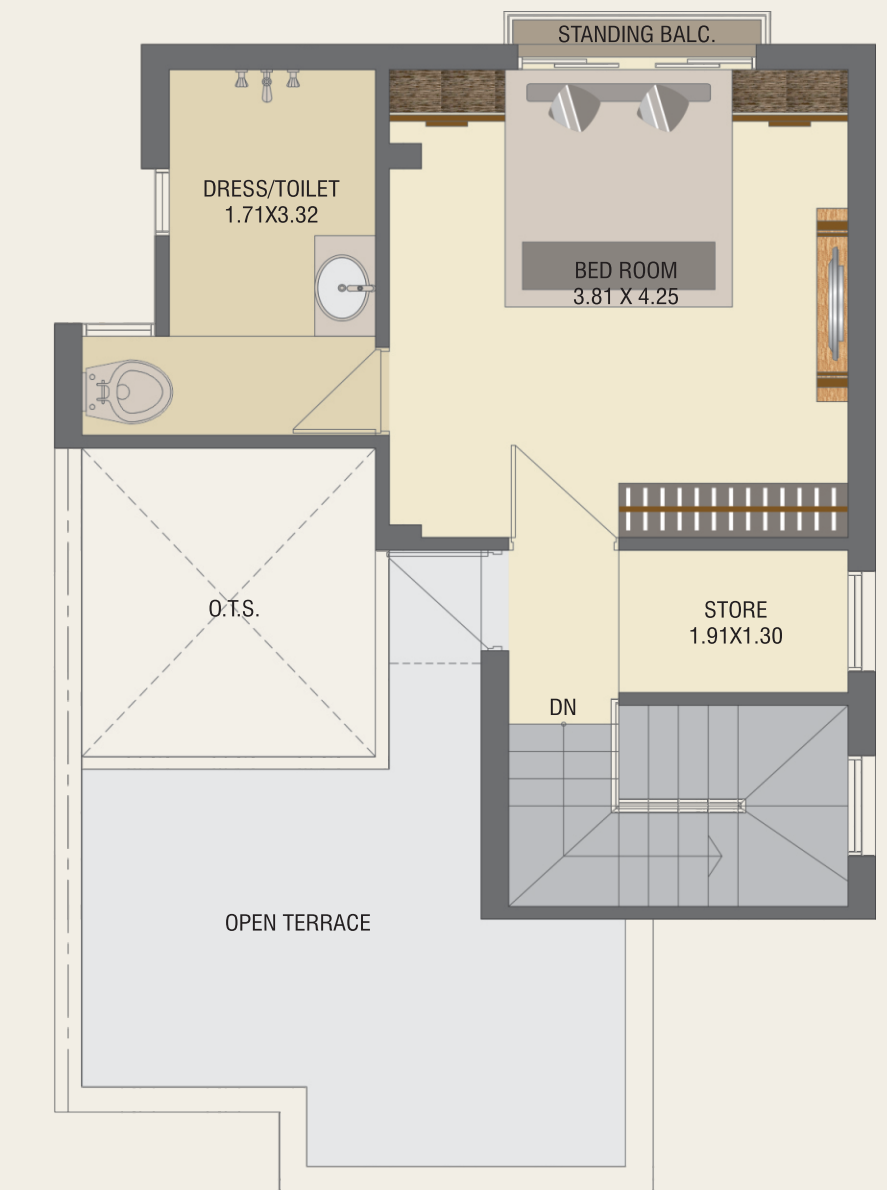
Ground Floor



First Floor

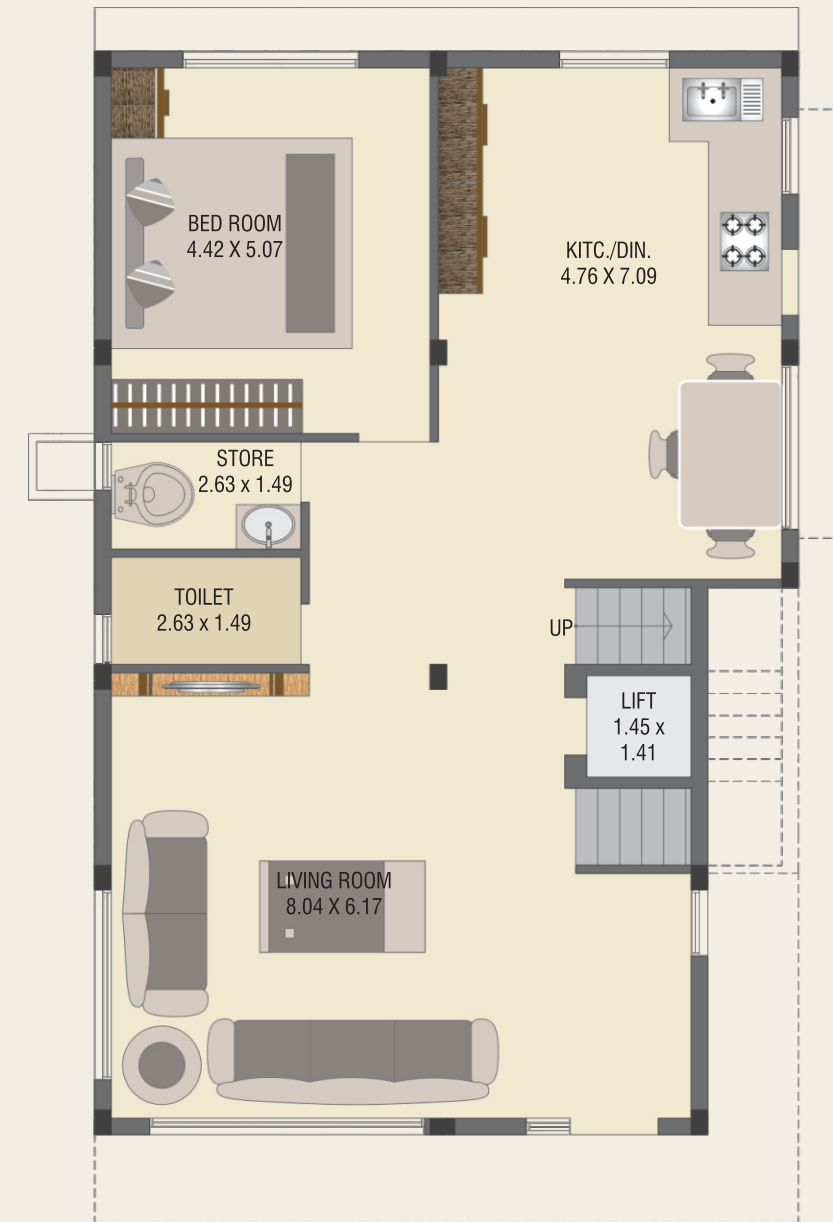


Second Floor

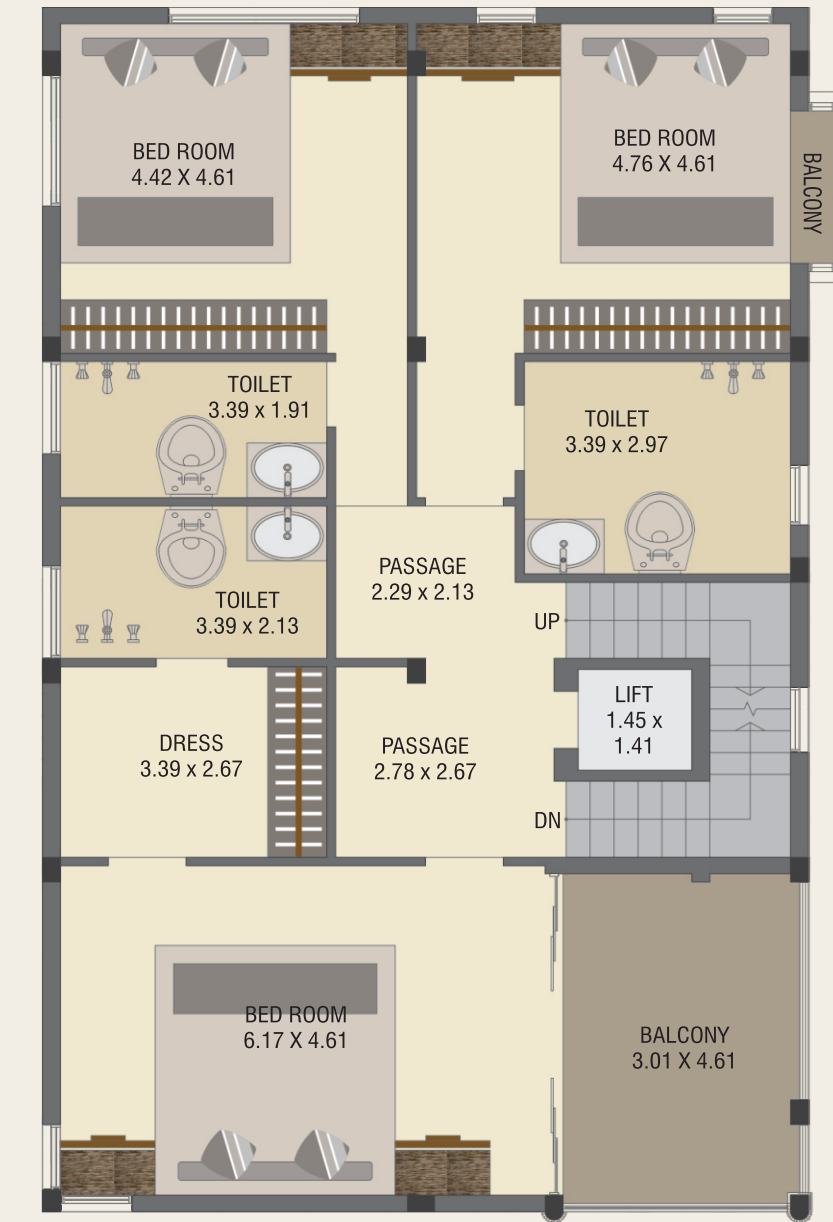


PLOT:
262

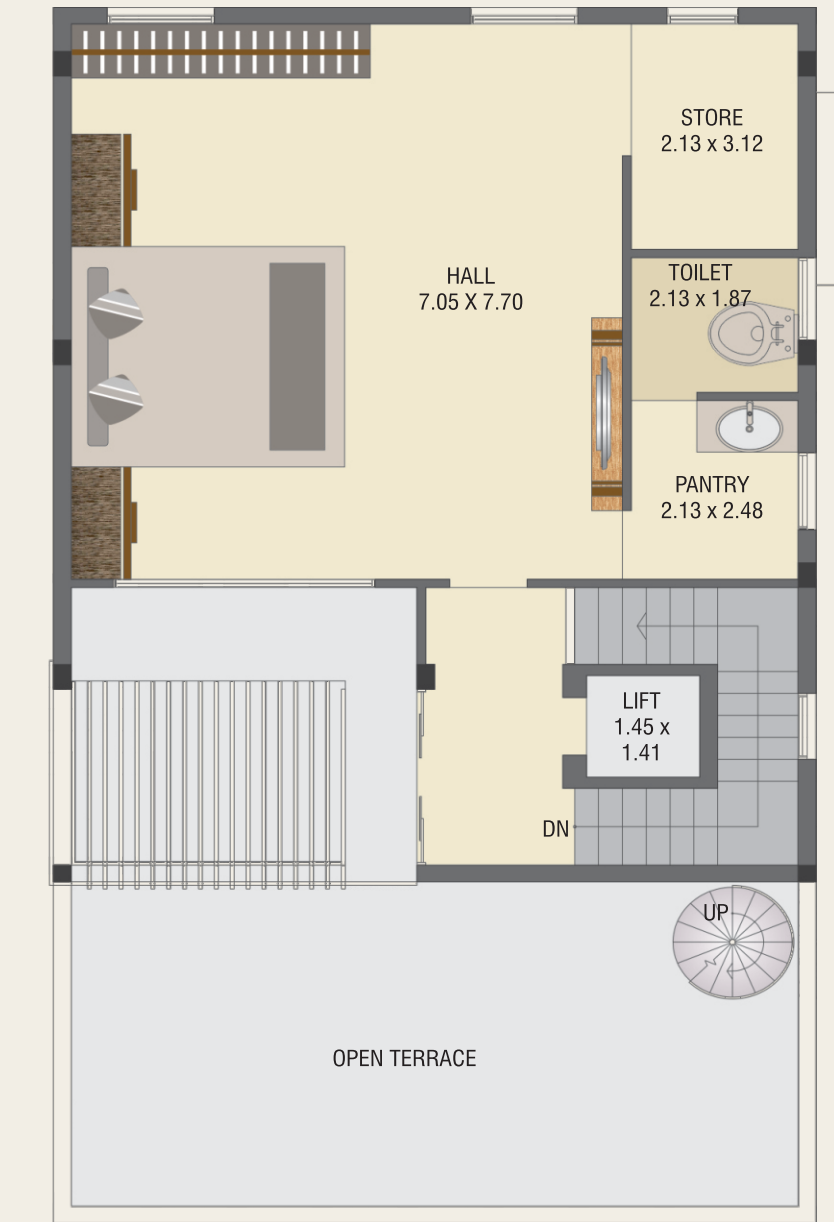
Ground Floor



First Floor

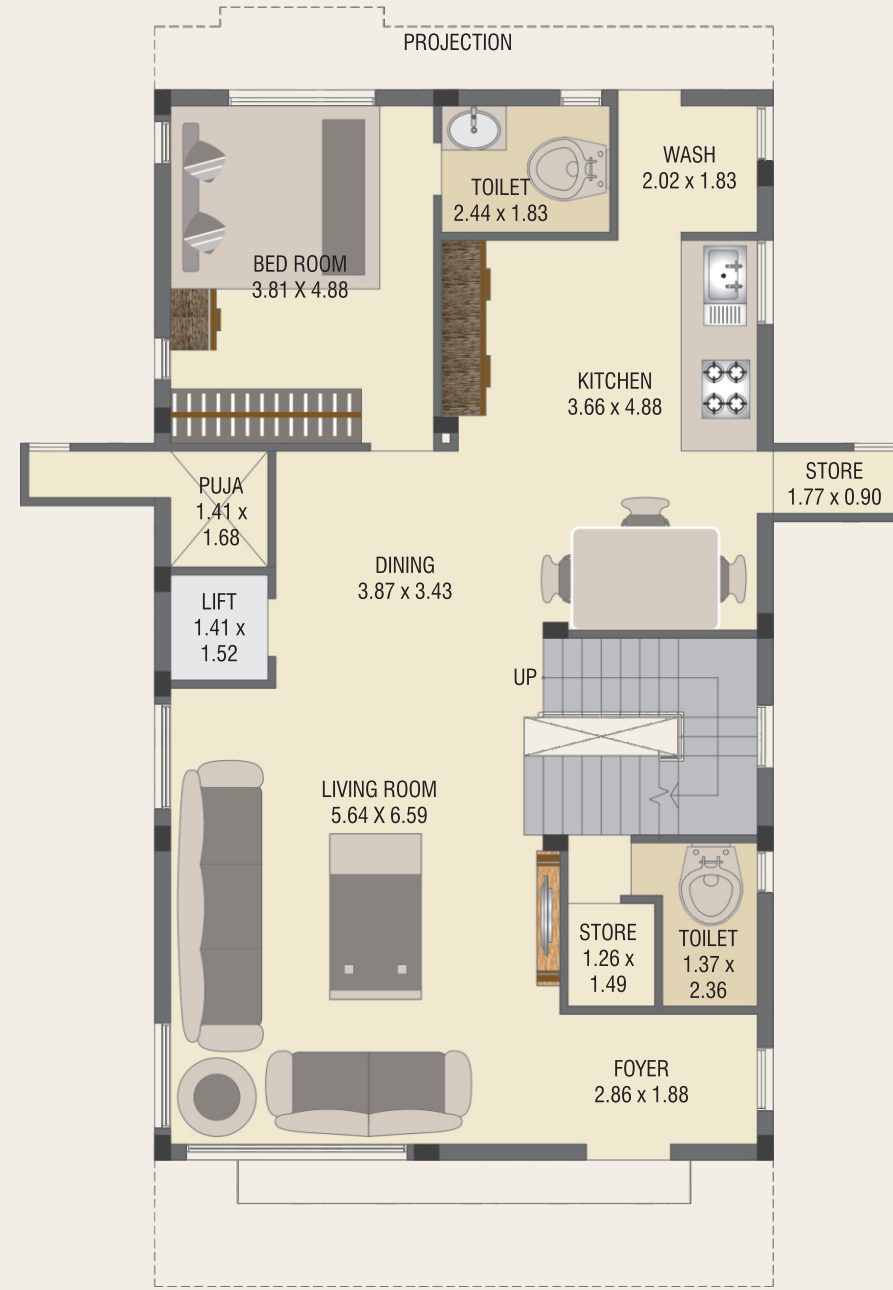


Second Floor

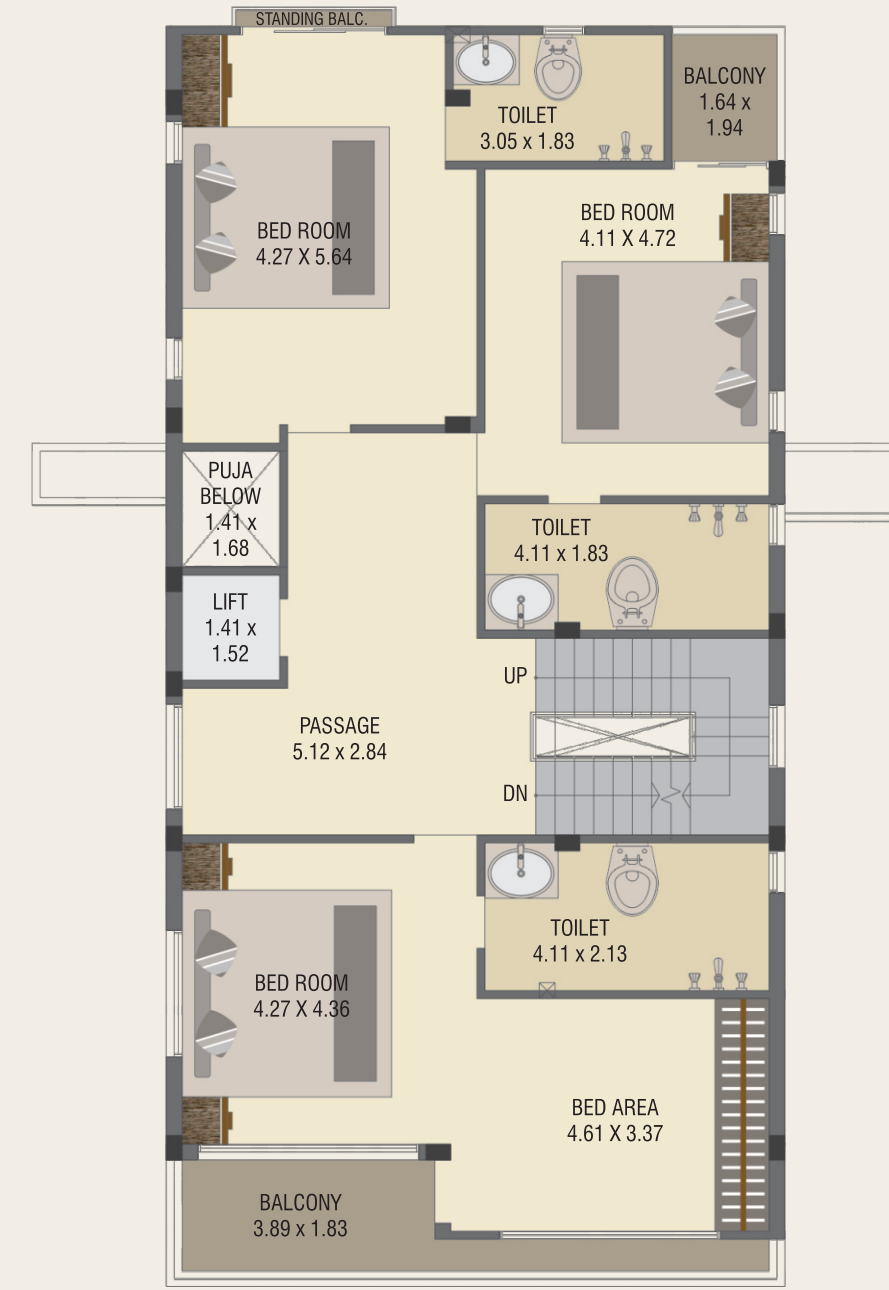


PLOT:
263 to 265

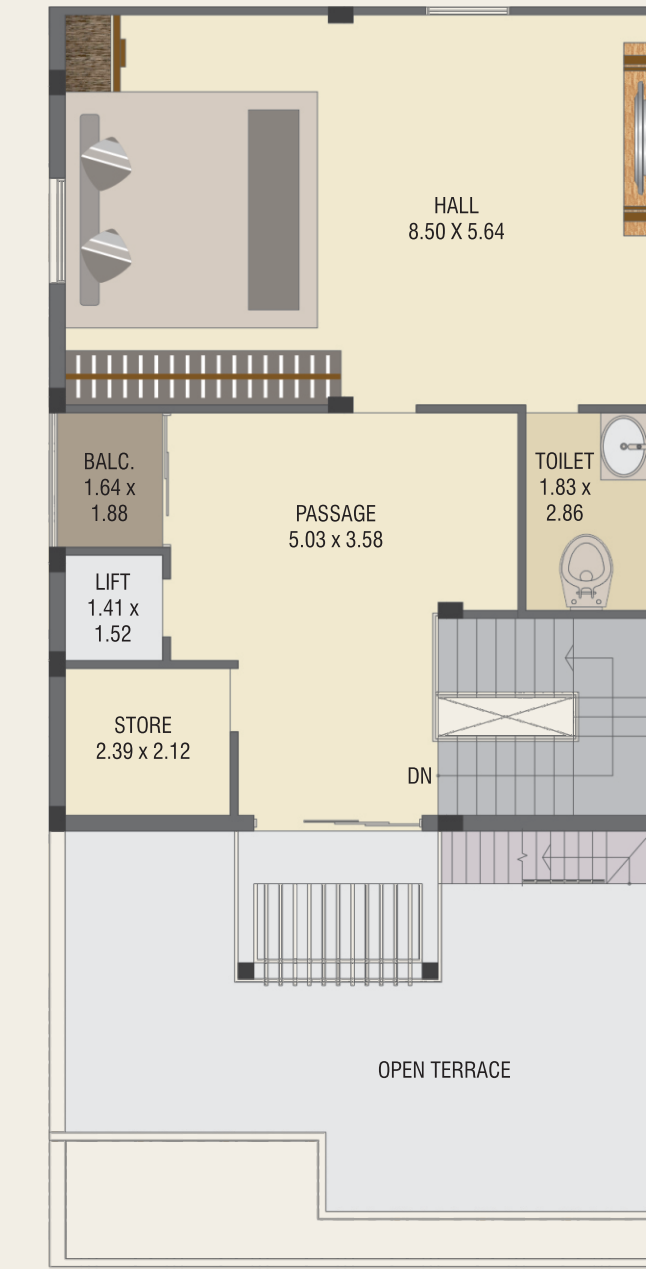
Ground Floor



First Floor

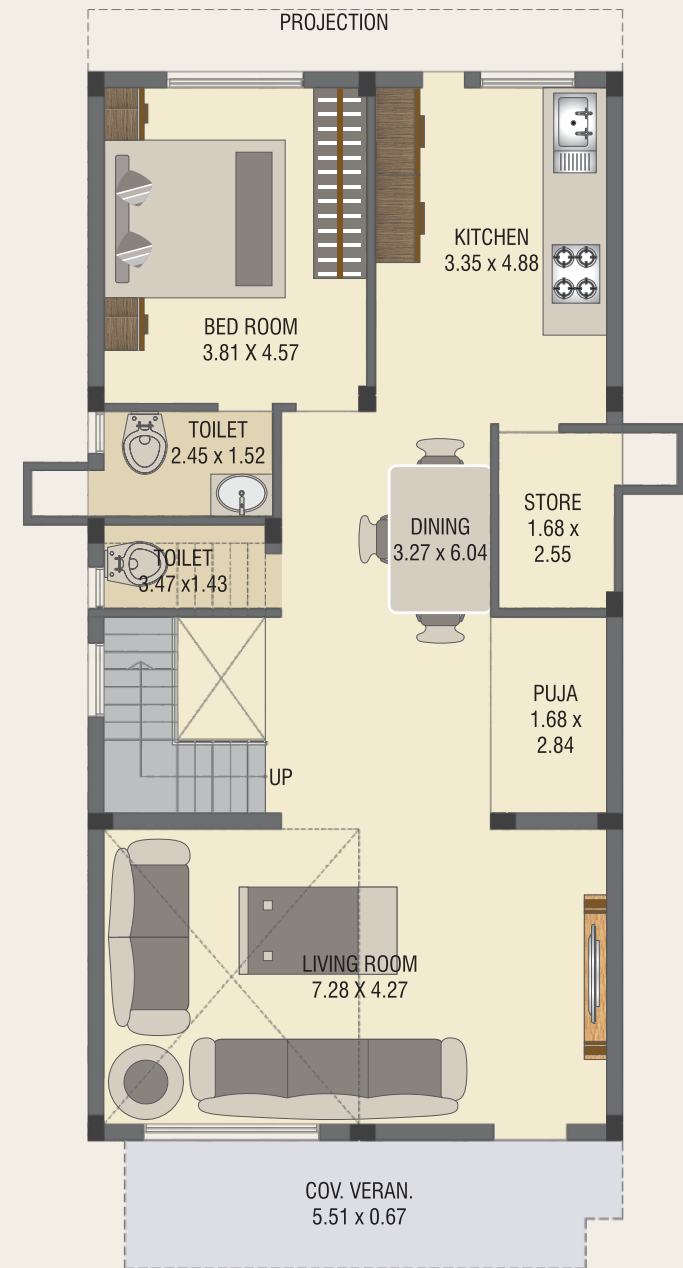


Second Floor

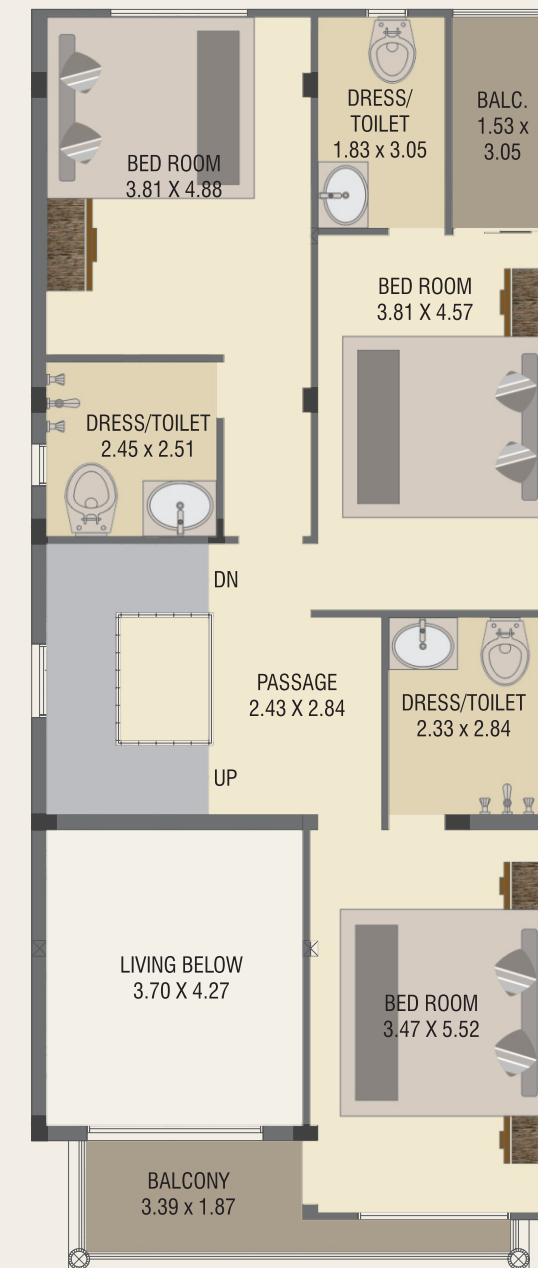


PLOT:
267 to 268

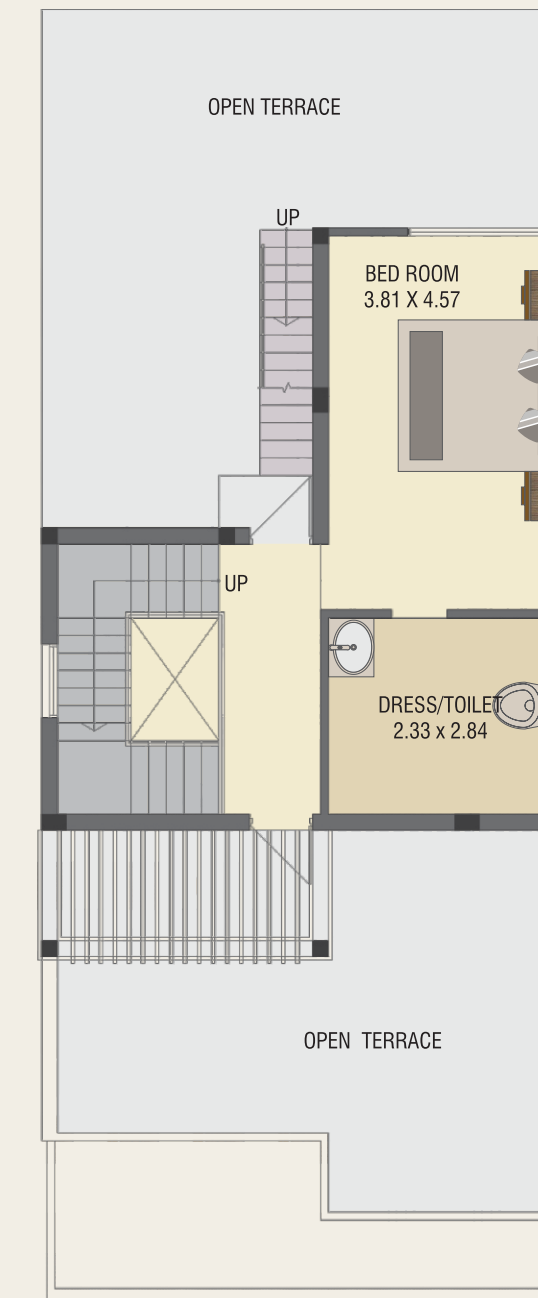
Ground Floor



First Floor



Second Floor

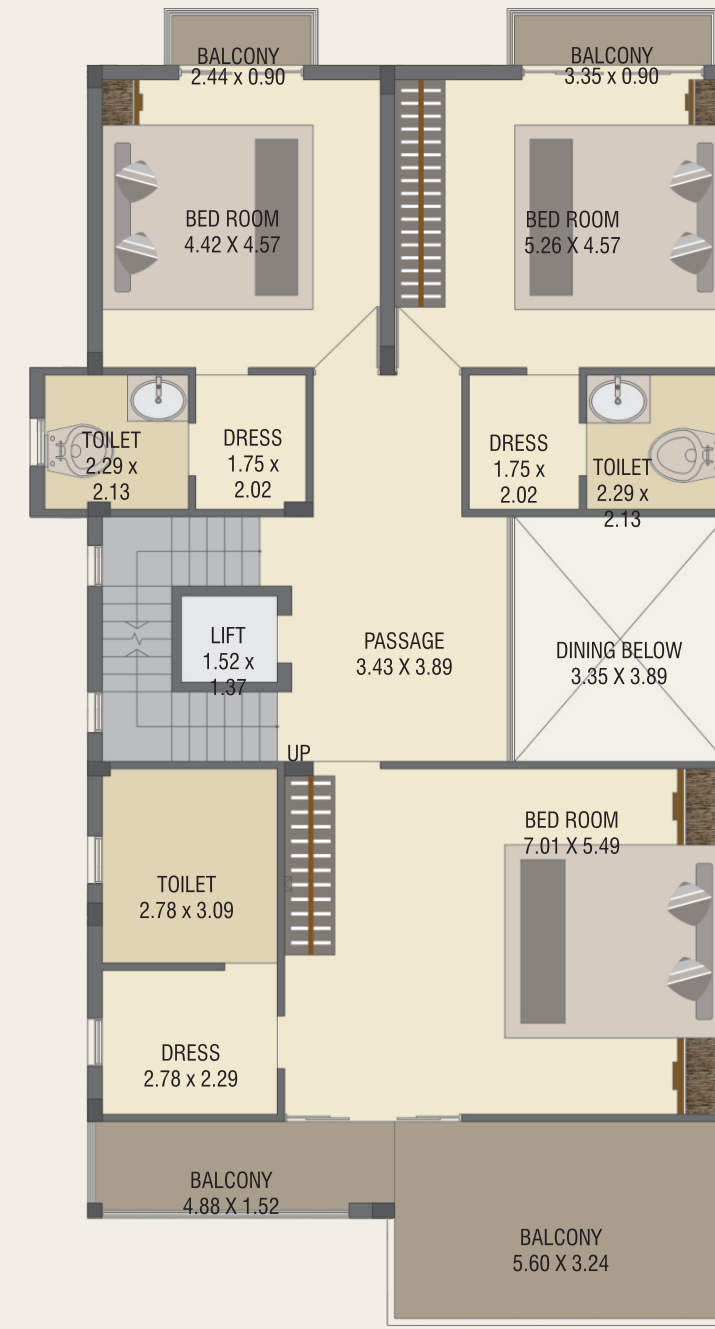




Ground Floor



First Floor

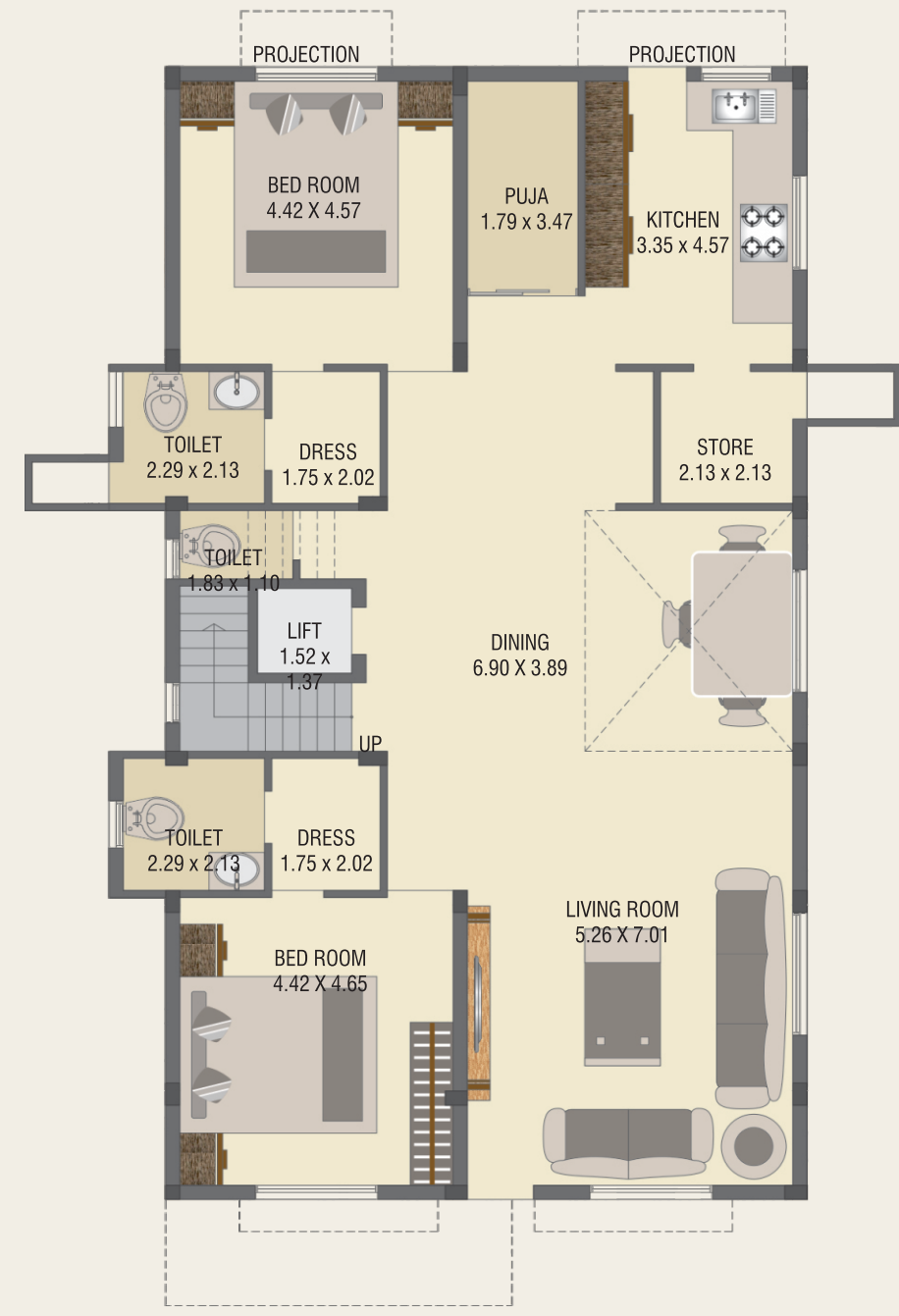


Second Floor

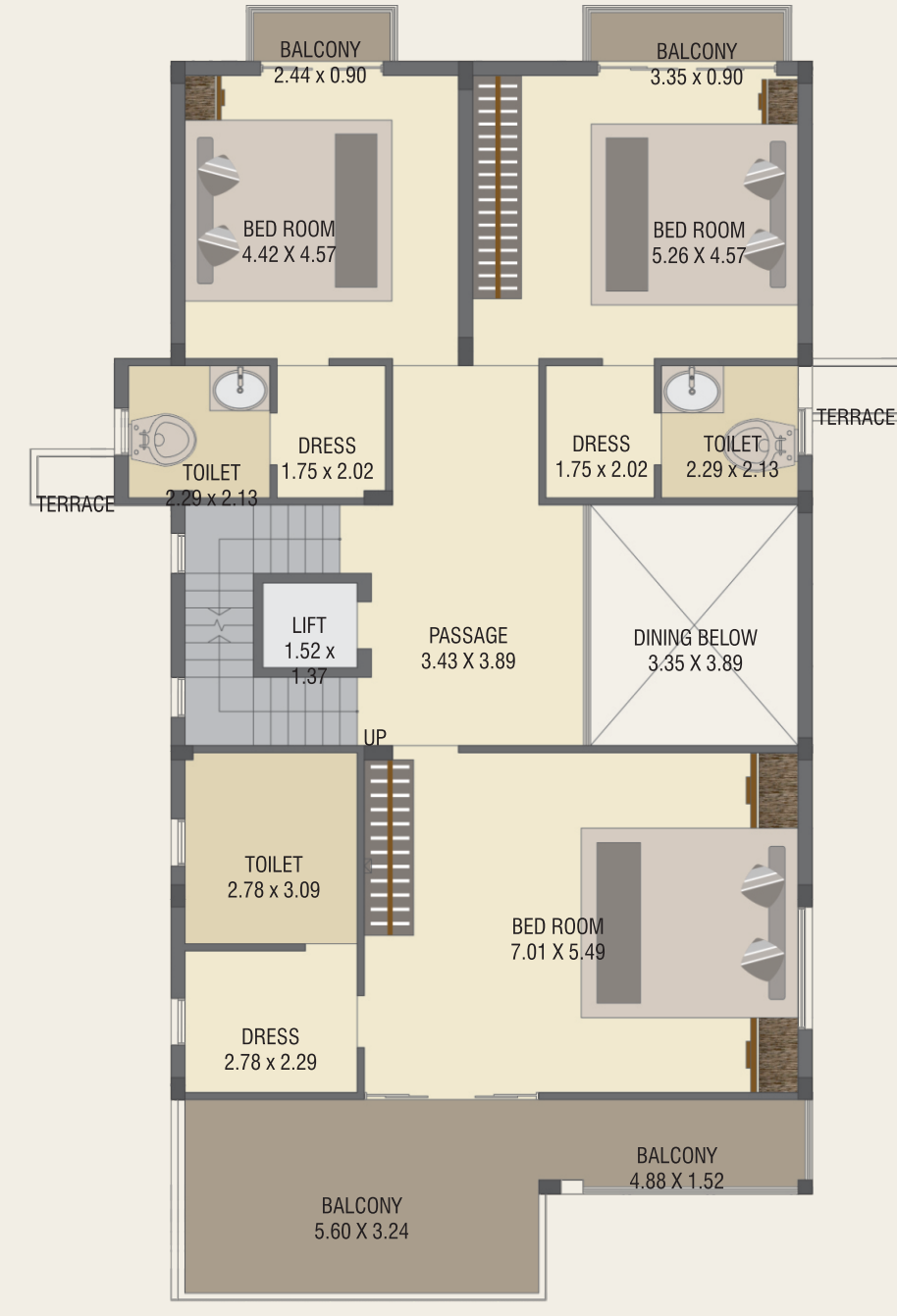


PLOT:
270

Ground Floor



First Floor

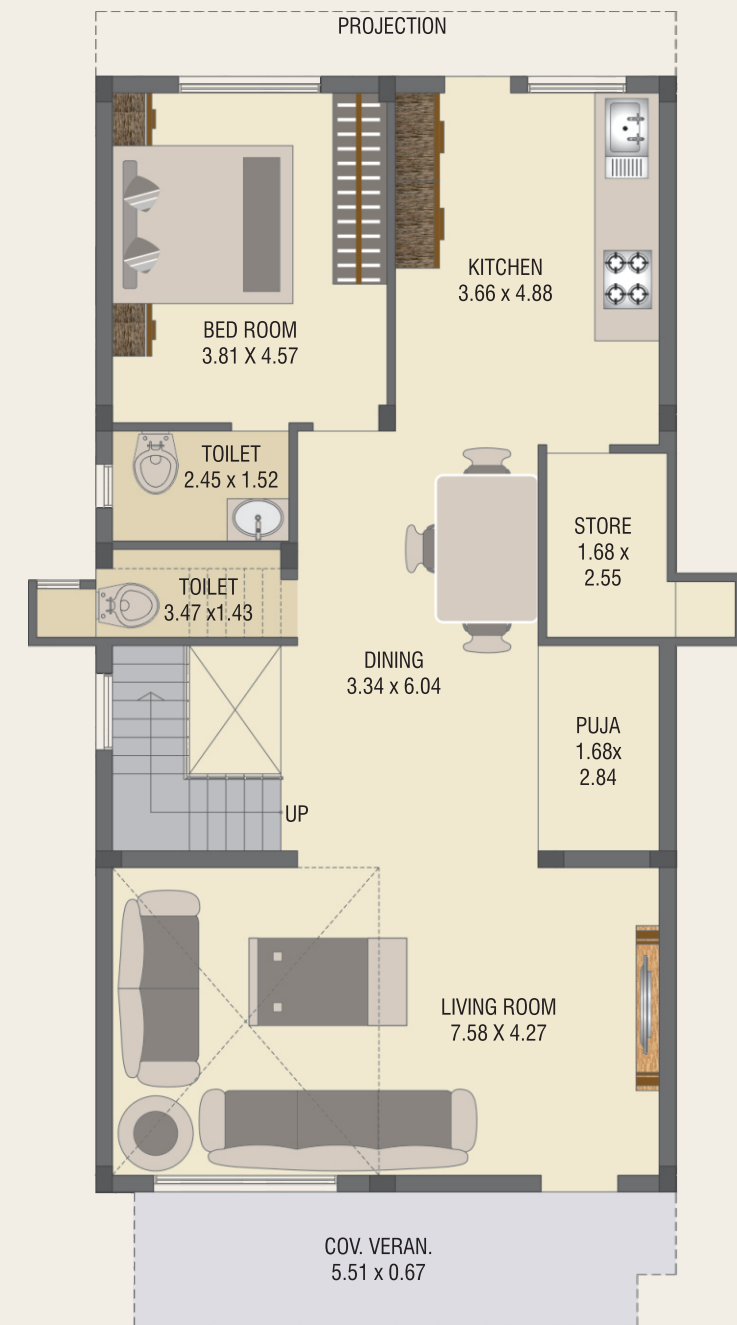


Second Floor

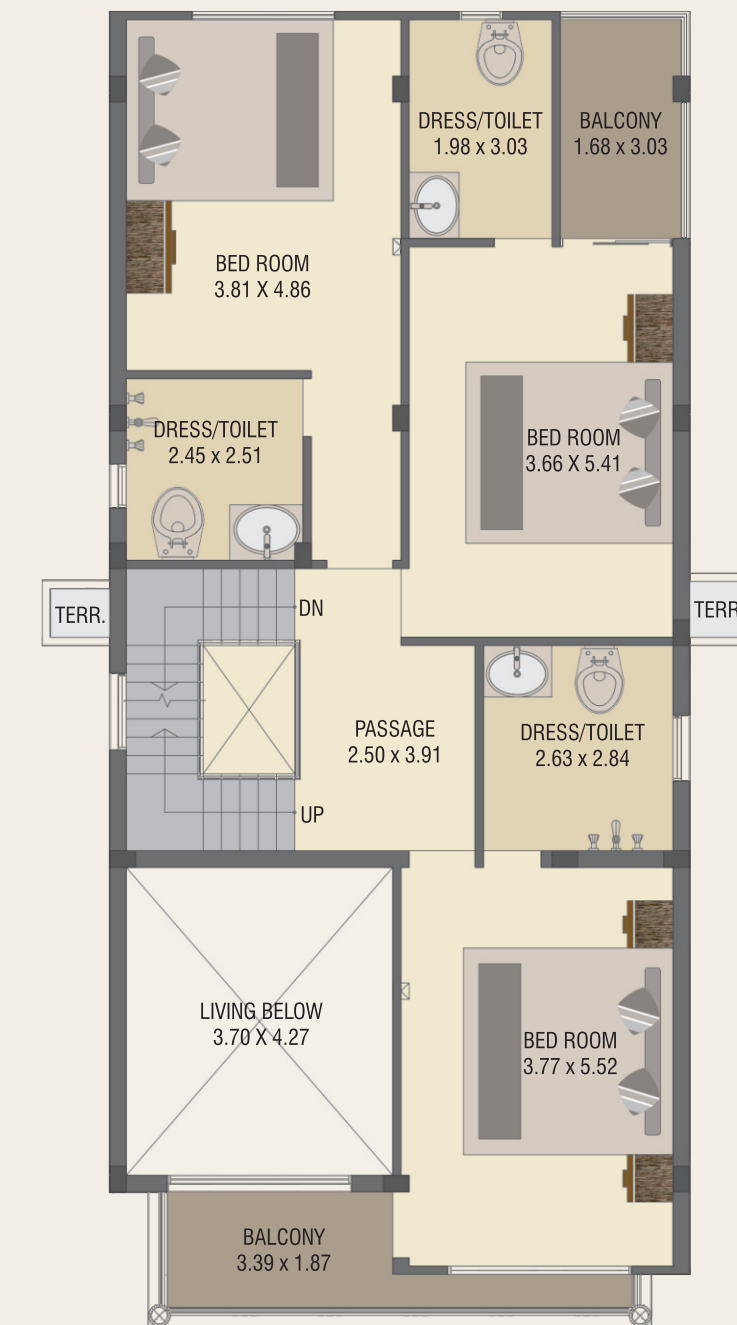


PLOT:
271 to 277

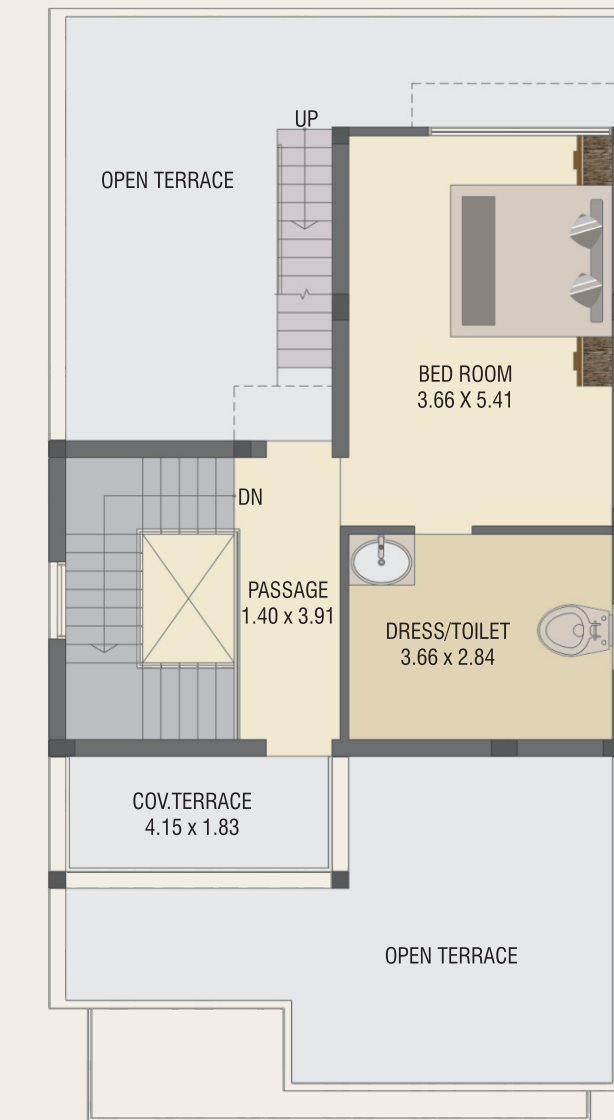
Ground Floor



First Floor

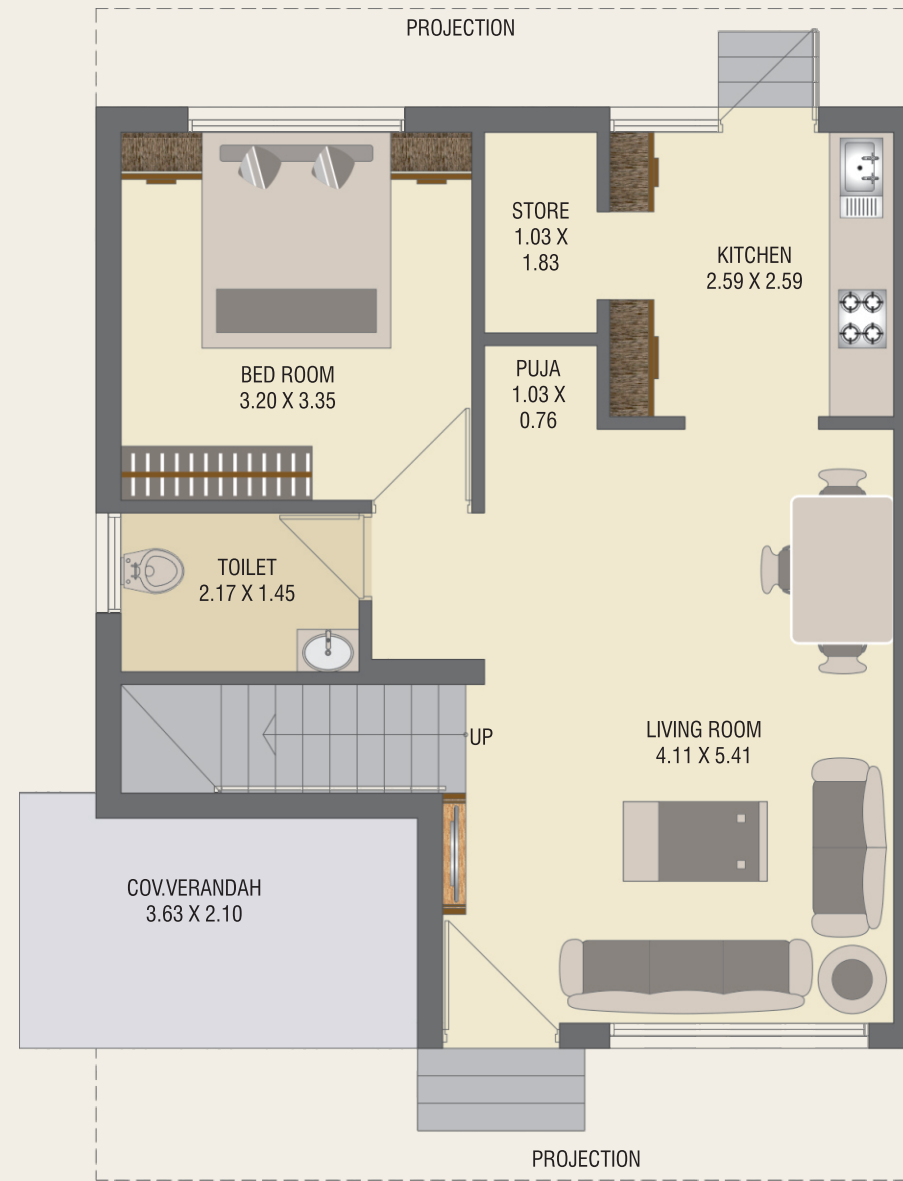


Second Floor

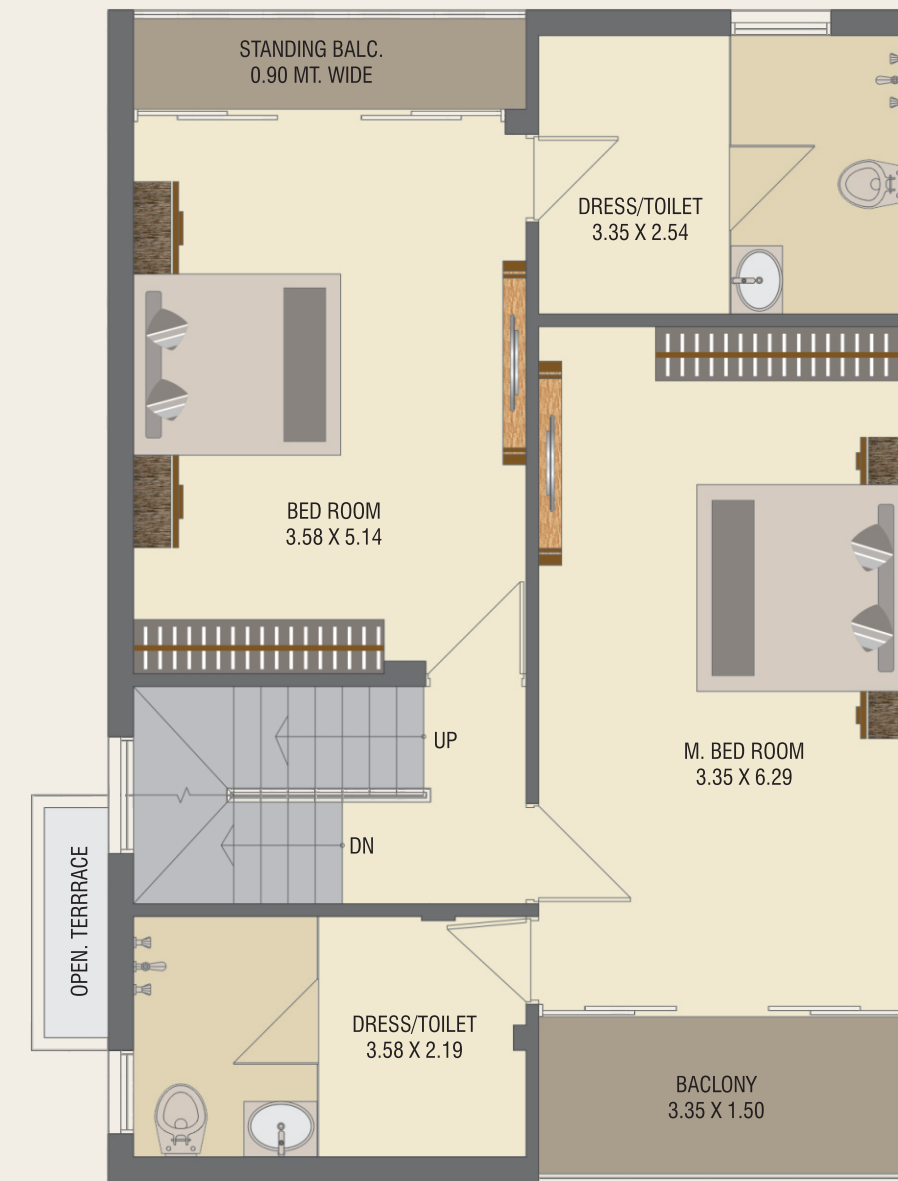


PLOT:
280 to 281

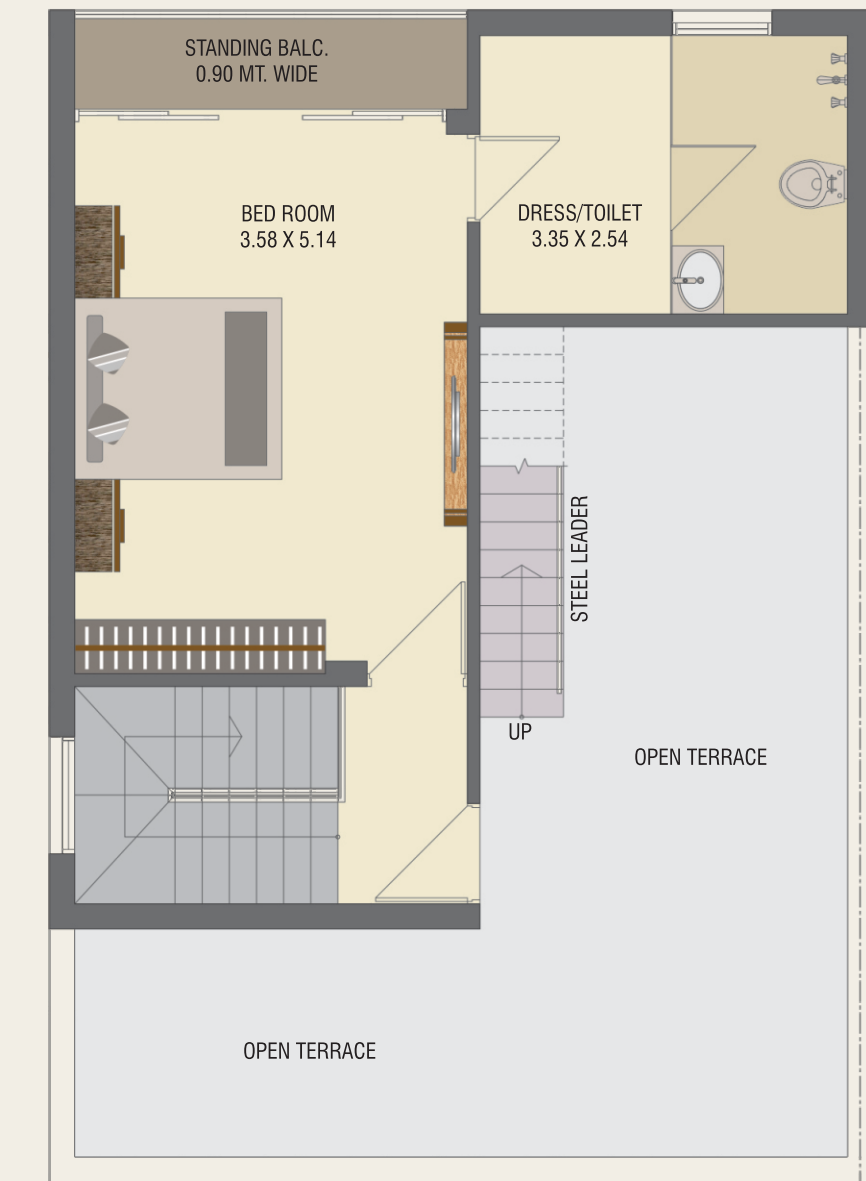
Ground Floor



First Floor

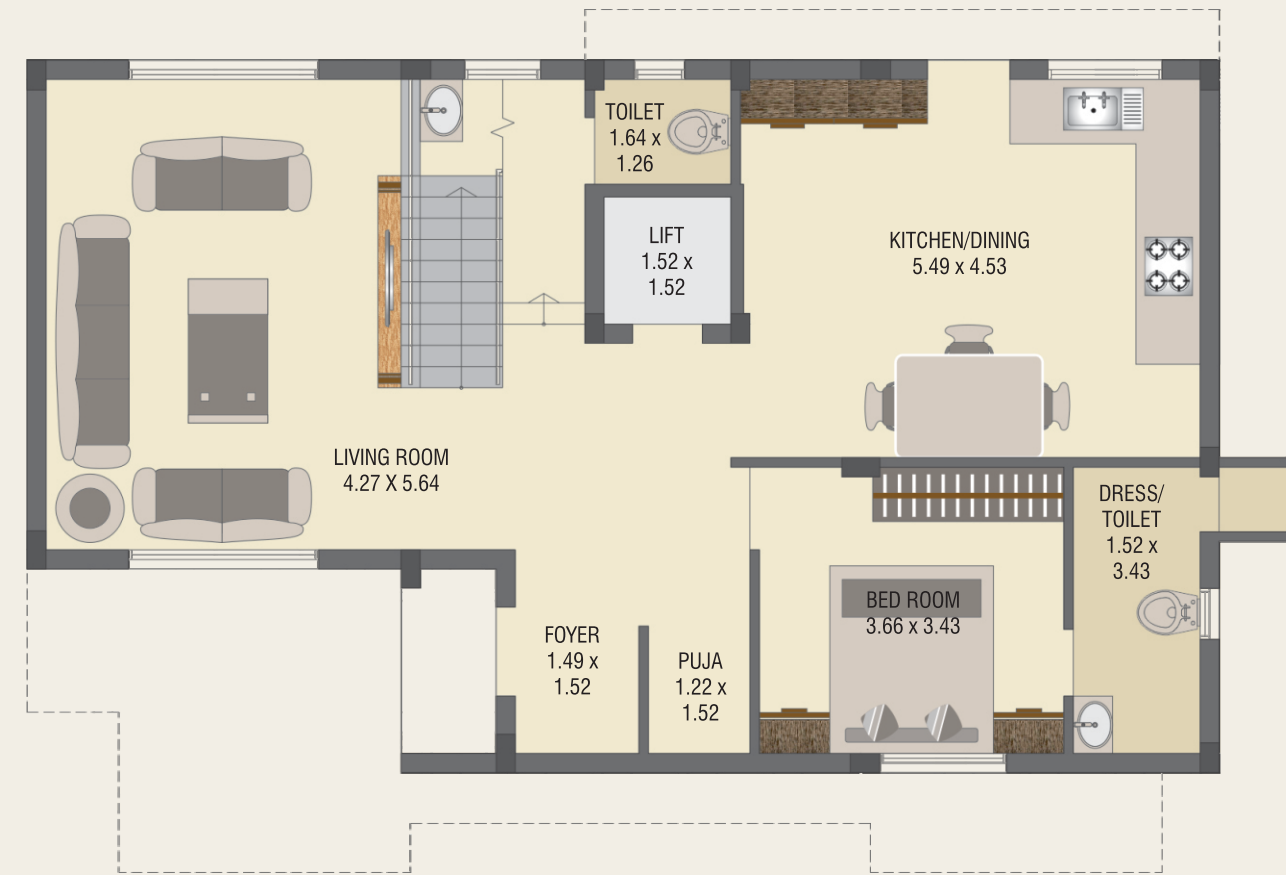


Second Floor

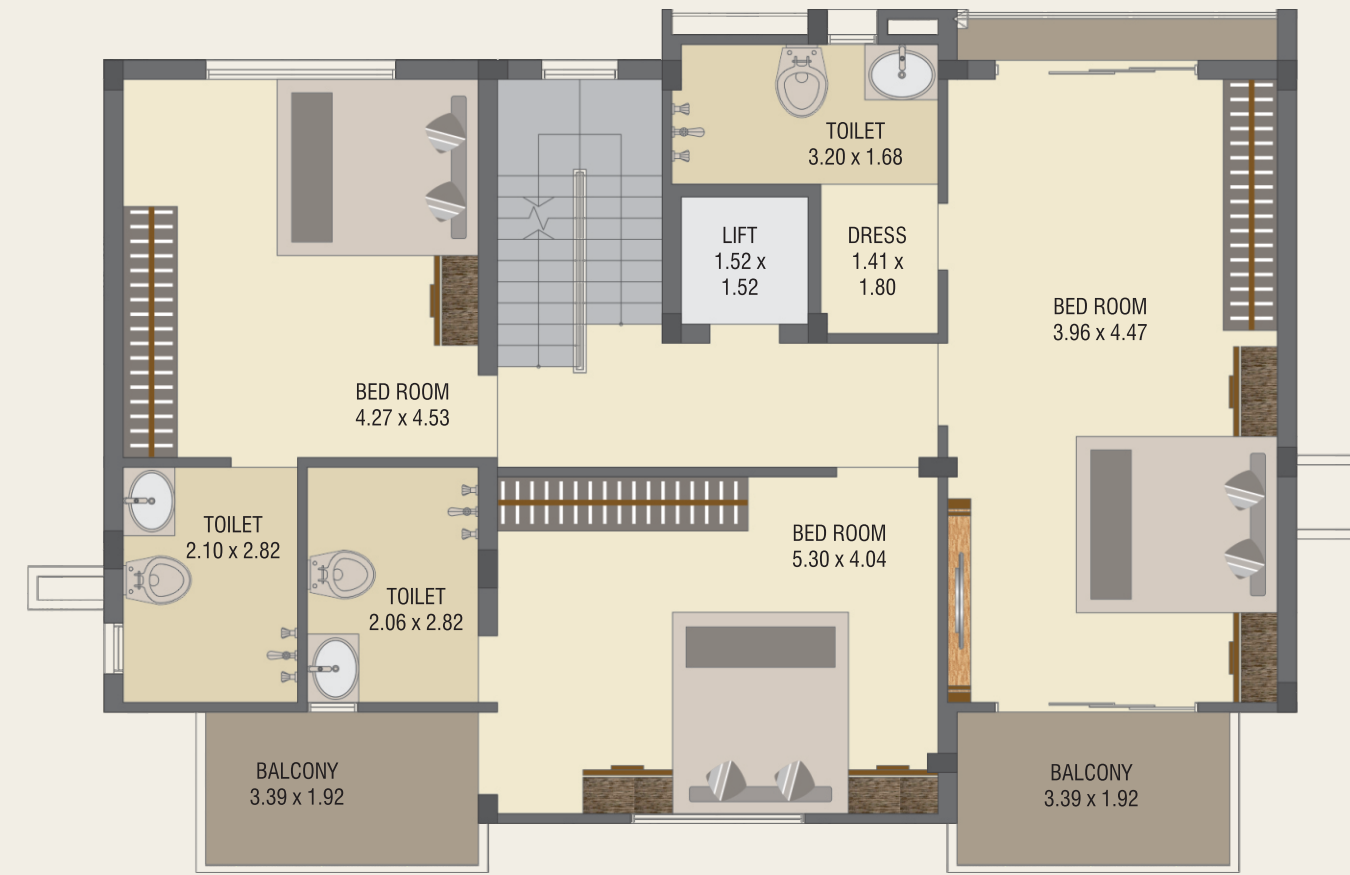


PLOT:
278 to 285

Ground Floor



First Floor

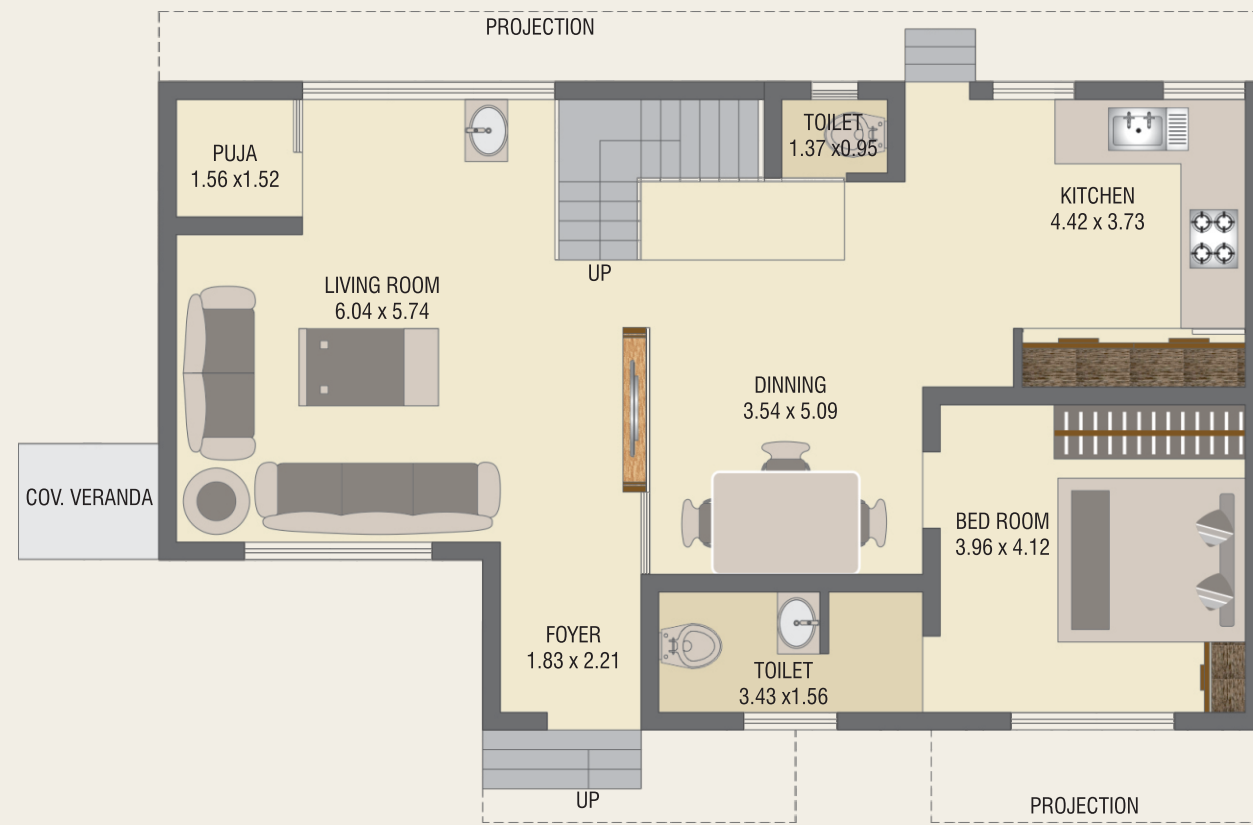


Second Floor

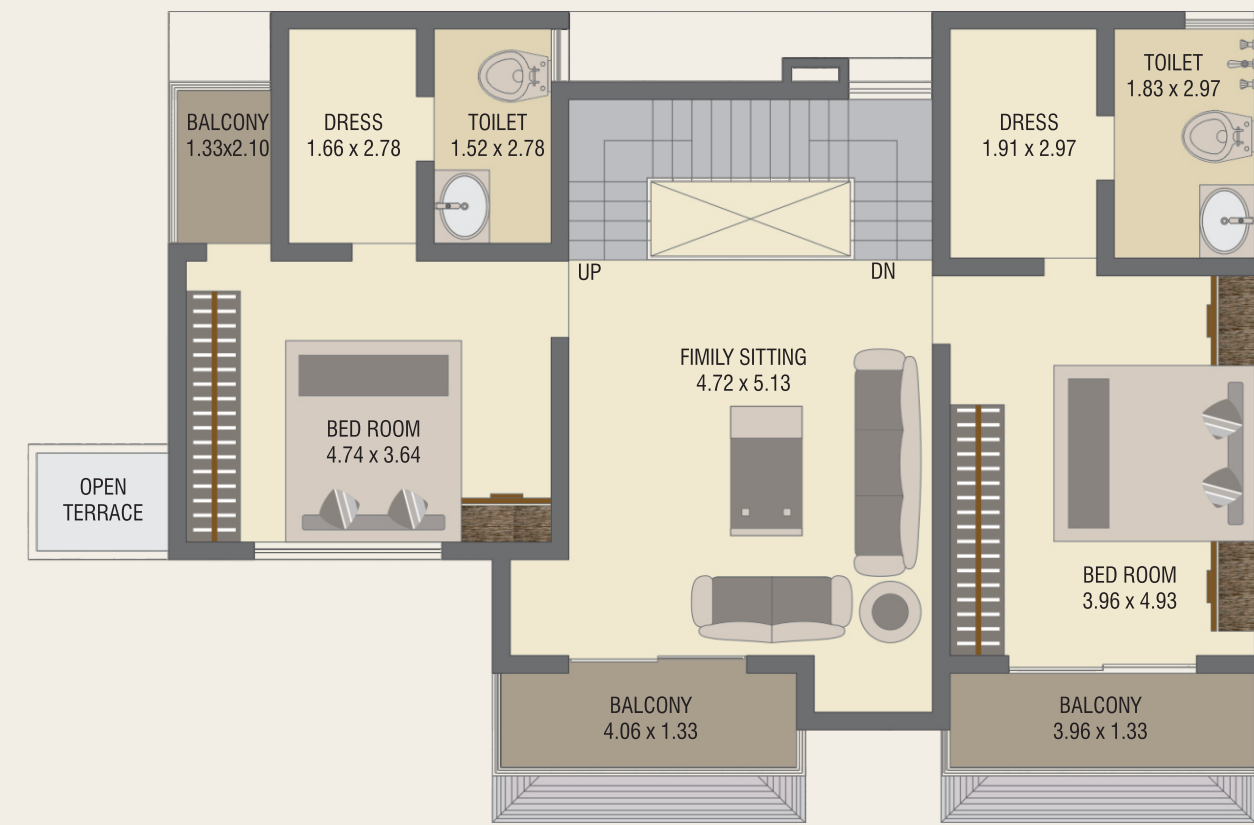


PLOT:
282 to 284
& 286

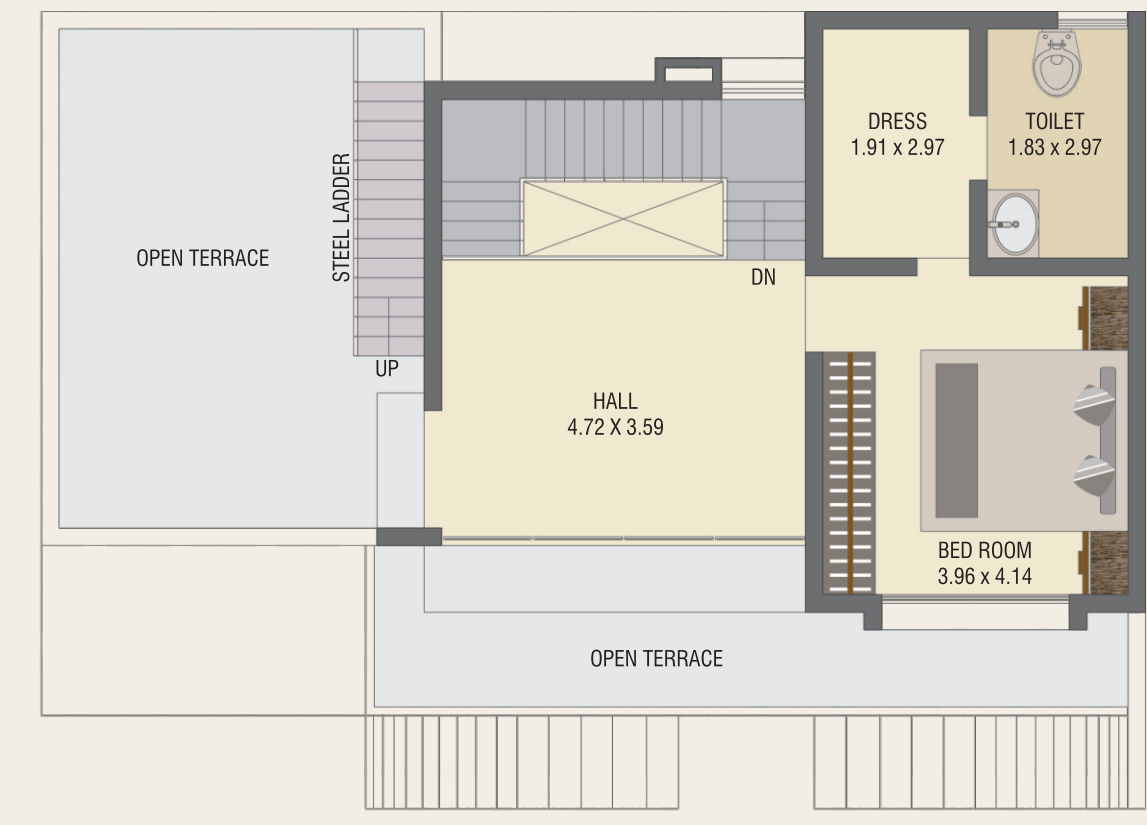
Ground Floor



First Floor

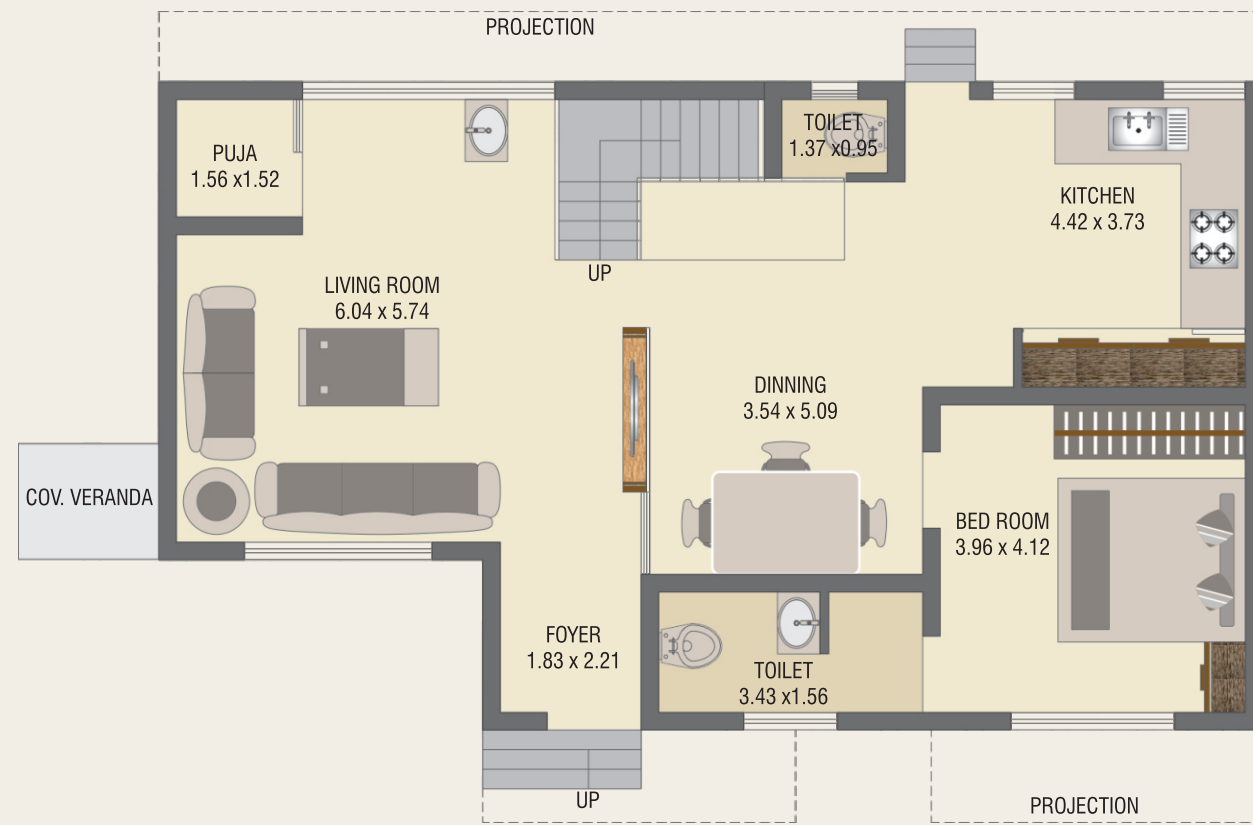


Second Floor

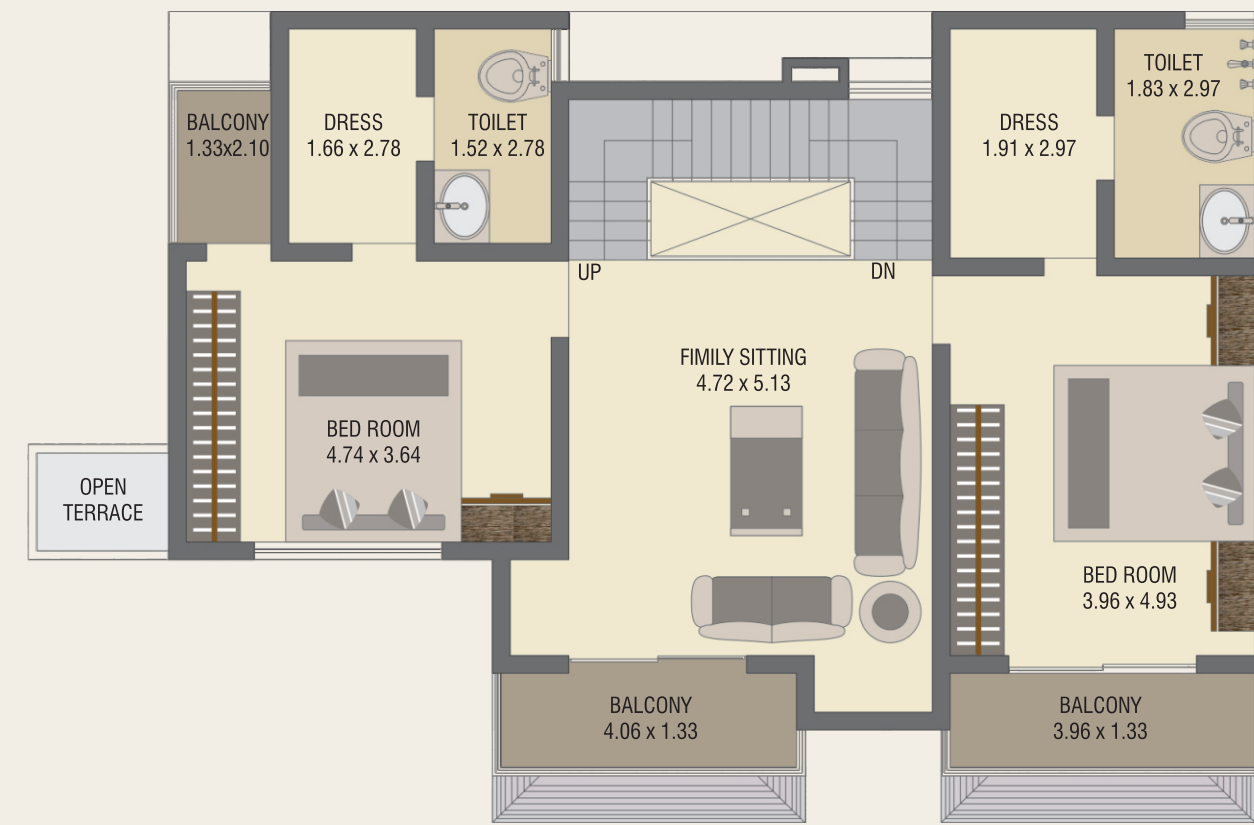


PLOT:
282 to 284
& 286

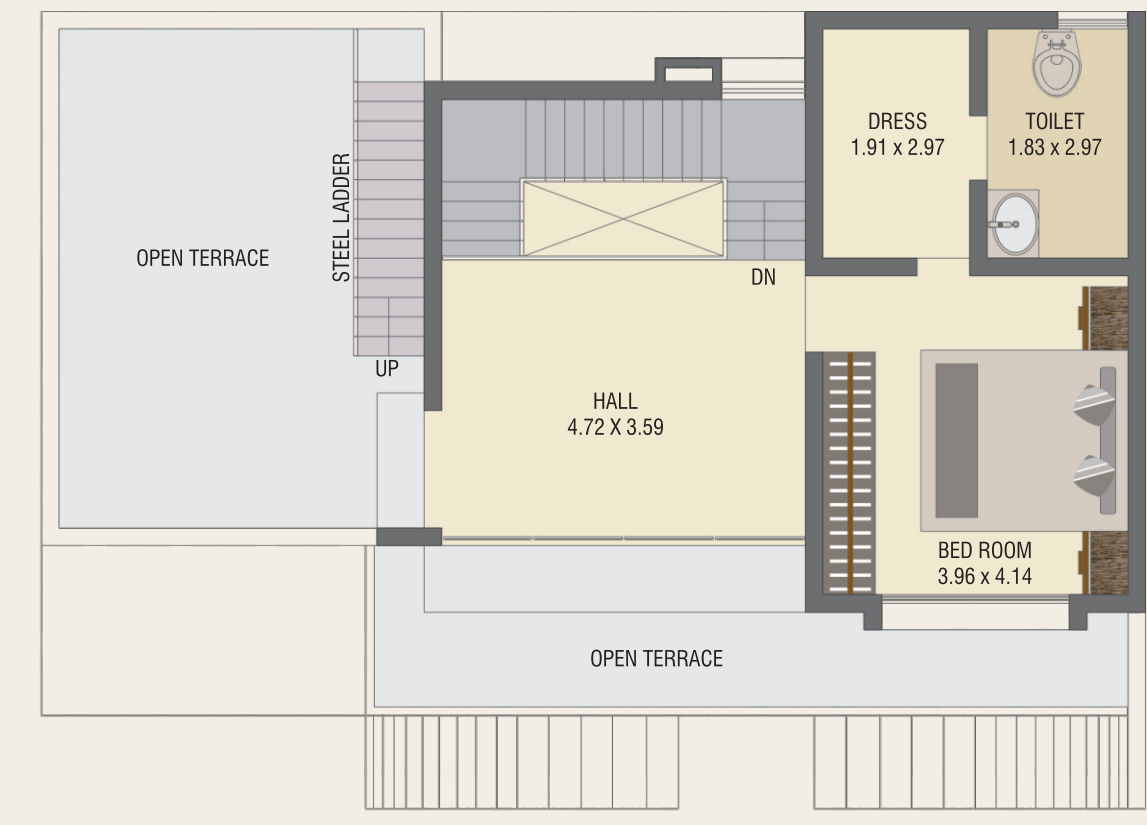
Ground Floor



First Floor



Second Floor



THE PRINCE CLUB

A world of A-list leisure facilities

Celebration Zone:

- Furnished, Plush Banquet Hall with Kitchen
- Party Lawns
- Coffee Shop
- Cafeteria
- Discotheque

Health & Rejuvenation:

- Gents Gym
- Ladies Gym
- Large Swimming Pool
- Ladies Swimming Pool
- Landscaped Garden with Outdoor Seating & Covered Sitting
- Health Club (Jacuzzi / Spa / Massage)
- Indoor Games Section

Kids Fun:

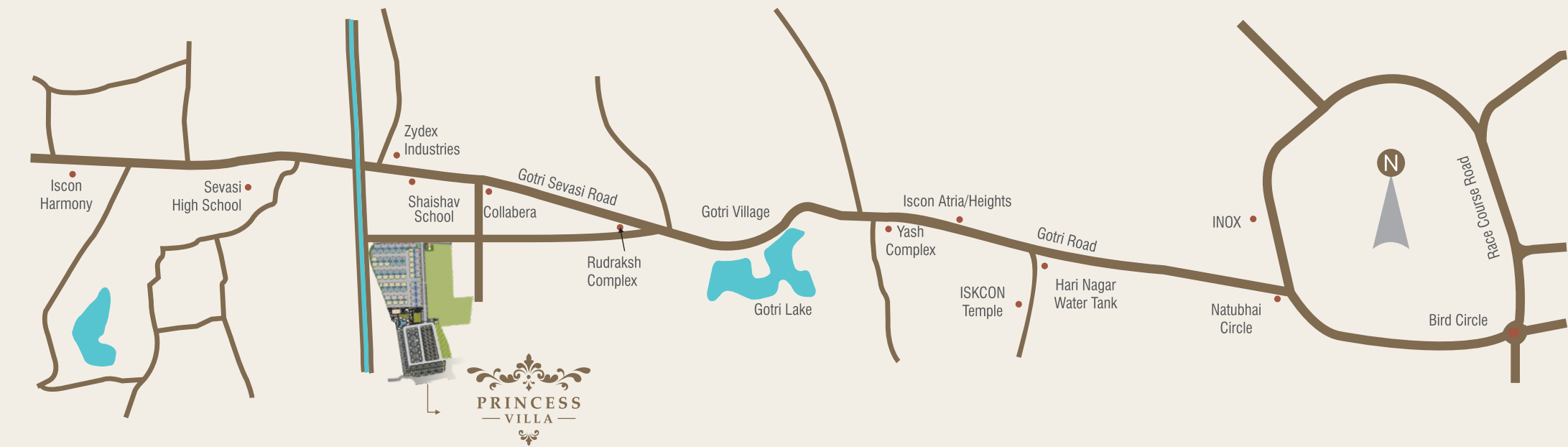
- Kids Splash Pool
- Children's Cartoon Theater
- Kids Games Zone

Others:

- Senior Citizen's Sit-out Area
- Club Entrance Foyer / Lounge
- Theater
- Fully Furnished Guest Rooms
- Temple



Key Plan



Developers : **PARESHWAR INFRA**

Architect : Placekiness Associates, Ahmedabad.

Disha Architect, Vadodara.

Structural Consultant : Yognipun Associates, Vadodara.

Electric & Plumbing Consultant : MEP Consultancy, Ahmedabad.

Payment Terms:

25%	Booking Amount
15%	Plinth Level
15%	Ground Floor Slab Level
15%	First Floor Slab Level
10%	Second Floor Slab Level
7.5%	Outside Plaster Level
7.5%	Inside Plaster Level
5%	Finishing Level

Please Note: • Actual possession of the Unit shall be handed over to the Member within 30 days of the settling of all the accounts and dues. Sale Deed, Documentation Charges, Stamp Duty Charges, Common Maintenance Charges, Service Tax Charges etc. will be Extra be borne by the Buyers •Payment Schedule must be followed strictly; any delay in payment shall incur Interest penalty at the rate of 18% P.A. on outstanding amount. Two Installment Continuous default in payment shall lead to total cancellation of the Unit. • Total Amount of the Extra Work must be deposited in full in advance then only work shall be executed. • Sale Deed (Dastavej) to be done after settlement of all accounts. •Maintenance Deposit per unit must be deposited before 1 month of possession of the unit • In case of cancellation of any Unit, Government Taxes will be deducted towards Administrative Charges from the Refund Amount. •The Refund shall be paid only after the New Booking of the booked Unit. • Actual Dimensions may vary as per the site conditions • Developers/Architect reserves all the right to change/alter/raise scheme related measurement, design, Drawings and price per unit etc and shall be binding to the Buyers unconditionally. • Buyer's are not allowed to do any external change in elevation of the Bungalow. • This brochure is not a legal document, this is only for presentation of the project. • Subject to Vadodara Jurisdiction.